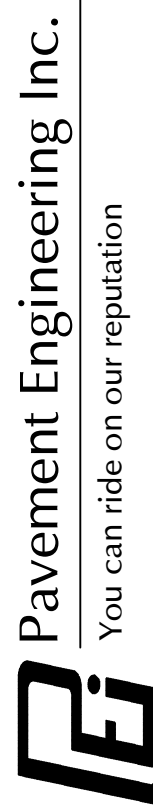


BERRYESSA UNION SCHOOL DISTRICT 2021 PAVEMENT IMPROVEMENT PROJECT BID NO. B-04-2020-21



You can ride on our reputation
Corporate Office:
3485 Sacramento Drive, Suite A
San Luis Obispo, CA 93401
805.781.2265

BERRYESSA UNION SCHOOL DISTRICT

2021 PAVEMENT IMPROVEMENT PROJECT
TITLE SHEET



DRAWN BY: CH
PROJECT NUMBER: 200176-01
SCALE: NO SCALE
VERIFY SCALE
BAR REPRESENTS 1" ON ORIGINAL
DATE: NOVEMBER 2020
SHEET NUMBER:



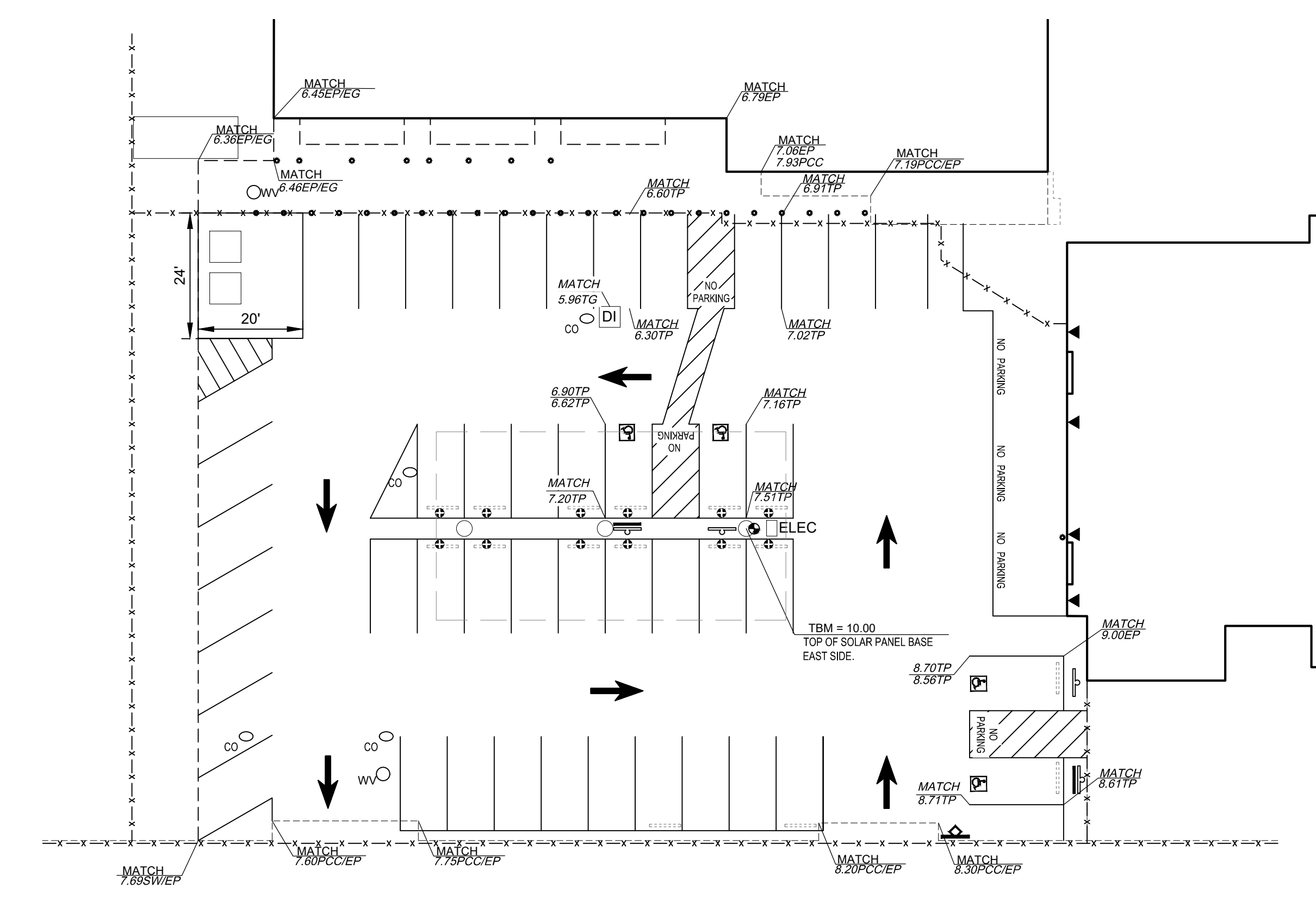
AREA MAP
NTS

SCHOOL LOCATION	
SITE NO.	SCHOOL ADDRESS
S1	TOYON ELEMENTARY SCHOOL 995 BARD ST, SAN JOSE, CA 95127
S2	BROOKTREE ELEMENTARY SCHOOL 1781 OLIVETREE DR, SAN JOSE, CA 95131
S3	NORTHWOOD ELEMENTARY SCHOOL 2760 TRIMBLE RD, SAN JOSE, CA 95132

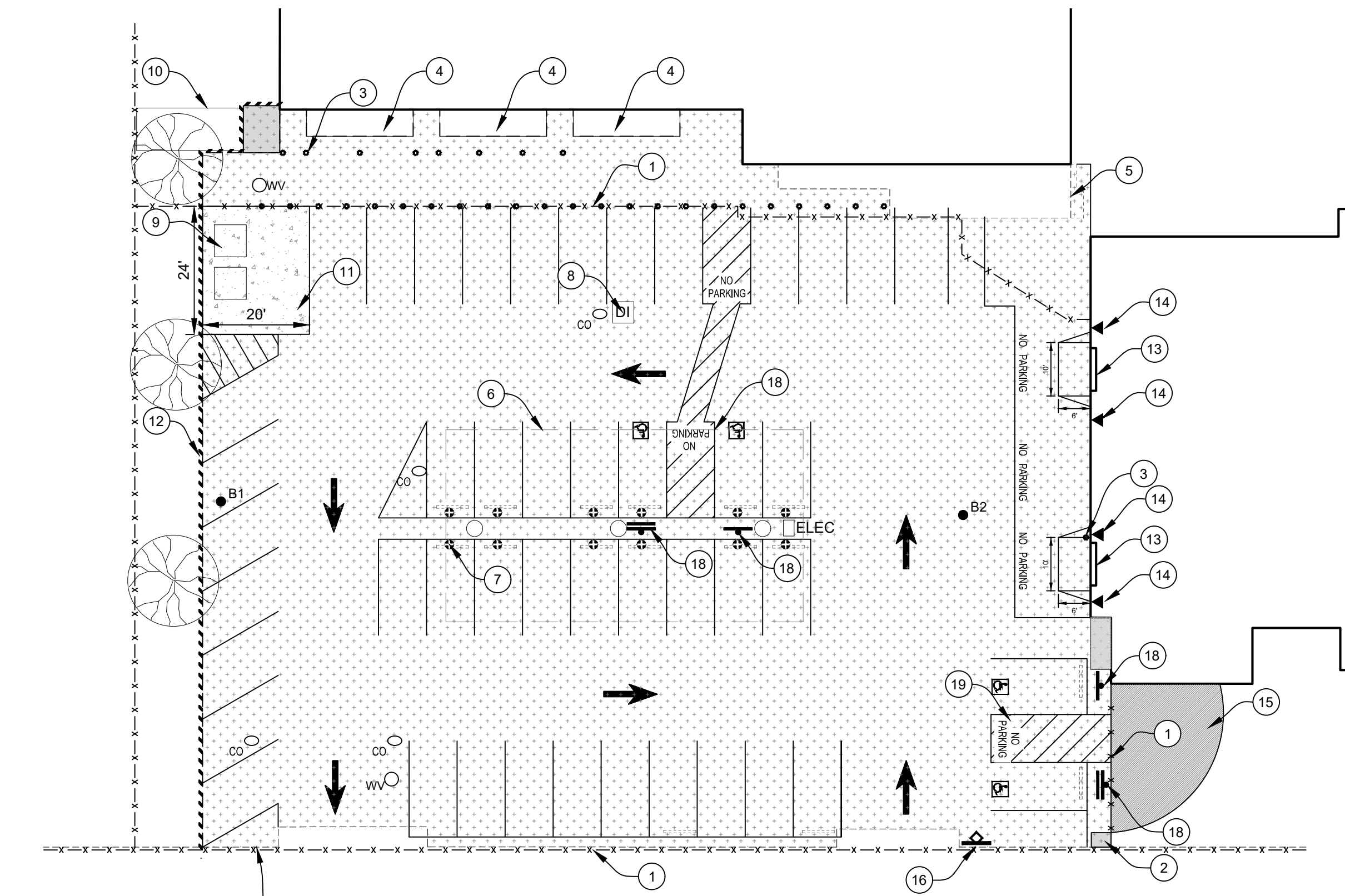
SHEET INDEX	
SHEET NO.	SHEET DESCRIPTION
1	TITLE SHEET
2	TOYON ELEMENTARY SCHOOL SITE PLAN & ENLARGEMENT A
3	BROOKTREE ELEMENTARY SCHOOL SITE PLAN & ENLARGEMENT B
4	BROOKTREE ELEMENTARY SCHOOL GRADING PLAN
5	NORTHWOOD ELEMENTARY SCHOOL SITE PLAN & ENLARGEMENT C
6	NORTHWOOD ELEMENTARY SCHOOL GRADING PLAN
7	DETAILS
8	DETAILS

NOTES:

- CONTRACTOR SHALL BE RESPONSIBLE FOR ANY AND ALL TESTING THAT MAY BE REQUIRED TO LEGALLY DISPOSE OF EXCESS MATERIAL.
- CONTRACTOR SHALL CLEAN ALL LOOSE ROCK, DEBRIS AND VEGETATION FROM PAVEMENT AREAS TO BE SEAL COATED.
- ALL CONFLICTING STRIPING SHALL BE REMOVED BY GRINDING OR SANDBLASTING.
- CONTRACTOR SHALL RESTRIPE ALL AREAS THAT ARE DISTURBED DURING CONSTRUCTION TO MATCH EXIST. STRIPING LAYOUTS.
- CONTRACTOR SHALL BE RESPONSIBLE FOR MATCHING ALL PLAYGROUND AND PARKING LOT STRIPING LAYOUTS. DIMENSIONS AND COLORS IN WORK AREAS. UNLESS OTHERWISE DESIGNATED ON THE PLANS. NEW STRIPING TO BE PLACED SHALL BE EVENLY SPACED. ANY STRIPING DISTURBED DURING CONSTRUCTION SHALL BE REPLACED BY THE CONTRACTOR TO MATCH EXISTING STRIPING LAYOUT.
- ALL WORK SHALL BE PERFORMED IN ACCORDANCE WITH THE PLANS & CONTRACT DOCUMENTS. WORK NOT COMPLYING WITH PLANS & CONTRACT DOCUMENTS WILL BE SUBJECT TO REMOVAL AND REPLACEMENT AT THE CONTRACTORS EXPENSE.
- THE CONTRACTOR SHALL REMOVE ALL CONSTRUCTION DEBRIS AND LEAVE WORK AREA CLEAN DAILY.
- ALL MATERIALS AND WORKMANSHIP ARE SUBJECT TO REVIEW BY OWNER. ANY PORTION OF THE WORK FOUND TO BE DEFECTIVE SHALL BE REPLACED BY THE CONTRACTOR PER CONTRACT AT NO ADDITIONAL COST TO THE OWNER.
- ABSOLUTE ACCURACY OF DRAWING CAN NOT BE GUARANTEED. WHILE EVERY EFFORT HAS BEEN MADE TO COORDINATE THE LOCATION OF THE EXISTING EQUIPMENT, PIPING, ETC. IT IS THE RESPONSIBILITY OF THE CONTRACTOR TO COORDINATE THE EXACT REQUIREMENTS GOVERNED BY ACTUAL JOB CONDITIONS.
- AREAS NOT IN SCOPE OF WORK DISTURBED DURING CONSTRUCTION SHALL BE RESTORED TO THE EXISTING CONDITION AT THE CONTRACTORS EXPENSE.
- REPAINT ALL CURBS IN WORK AREAS TO MATCH EXISTING. (2 COATS MINIMUM)
- CONTRACTOR SHALL PROPERLY COVER AND PROTECT UTILITY BOX LIDS PRIOR TO APPLYING SEAL COAT & REMOVE ALL PROTECTION AFTER SEALING WORK IS DONE.
- CONTRACTOR SHALL CLEAN OUT ALL DRAINAGE STRUCTURES WITHIN LIMITS OF WORK, INCLUDING DROP INLETS, & SHALL FLUSH STORM DRAIN LINES PRIOR TO COMPLETION OF WORK TO ENSURE NO BLOCKAGES EXIST IN THE SYSTEM.
- PROTECT EXISTING BUILDING STRUCTURES, AND ADJACENT FINISHED SURFACES DURING CONSTRUCTION. PATCH, REPAIR AND REFINISH AREAS DAMAGED OR IMPACTED BY WORK DURING THIS PROJECT TO MATCH ADJACENT UNDISTURBED AREAS. PATCHING, REPAIRING AND REFINISHING IS TO BE PERFORMED BY WORKMEN SKILLED IN THE TRADES INVOLVED.
- CONTRACTOR SHALL REMOVE ALL PICNIC TABLES, PLANTERS, BENCHES AND ALL OTHER REMOVABLE ITEMS IN WORK AREA PRIOR TO CONSTRUCTION. ITEMS SHALL BE REPLACED IN THEIR ORIGINAL LOCATIONS. CONTRACTOR SHALL BE RESPONSIBLE FOR REPLACEMENT OF DAMAGED ITEMS AT THE CONTRACTOR'S EXPENSE.
- CONTRACTOR SHALL HAVE LOCATING SERVICE VERIFY LOCATION OF ALL EXISTING UTILITIES PRIOR TO EXCAVATION. CONTRACTOR SHALL CONTACT THE ENGINEER TO REVIEW AND ADDRESS ANY UTILITIES CONFLICTING WITH THE SCOPE OF WORK.
- UTILITY BOXES IN CONSTRUCTION AREAS SHALL BE REUSED AND RAISED TO FINISHED GRADE. IF BOXES ARE NOT REUSABLE, CONTRACTOR SHALL NOTIFY ENGINEER PRIOR TO REMOVAL.
- ALL NEW CONCRETE SHALL BE DOWELED & EPOXIED INTO EXISTING CONCRETE WITH #4 REBAR X 12" MIN. @ 24" O.C. ALL AREAS OF PCC CHIPPED OR DAMAGED DURING CONSTRUCTION SHALL BE REMOVED AND REPLACED BACK TO THE NEXT JOINT.
- CONTRACTOR SHALL REMOVE AND REPLACE FENCING AS NECESSARY TO PROVIDE A UNIFORM COATING UNDER FENCING.
- CONTRACTOR SHALL NOT CUT ANY ROOTS GREATER THAN 2" IN DIAMETER WITHOUT PRIOR APPROVAL FROM THE CLIENT'S ARBORIST. ANY ROOTS WITHIN 4' OF THE TRUNK OF ANY OF THE TREES IN THE PROJECT SHALL NOT BE CUT FOR ANY REASON.



**BARD STREET
GRADING PLAN**
1" = 20'



ENLARGEMENT A
1" = 20'

CORING LOG				
NO.	HMA	AB	R-VALUE	FABRIC (Y/N)
B1	4"	5"	17	N
B2	3-1/4"	5"	---	N

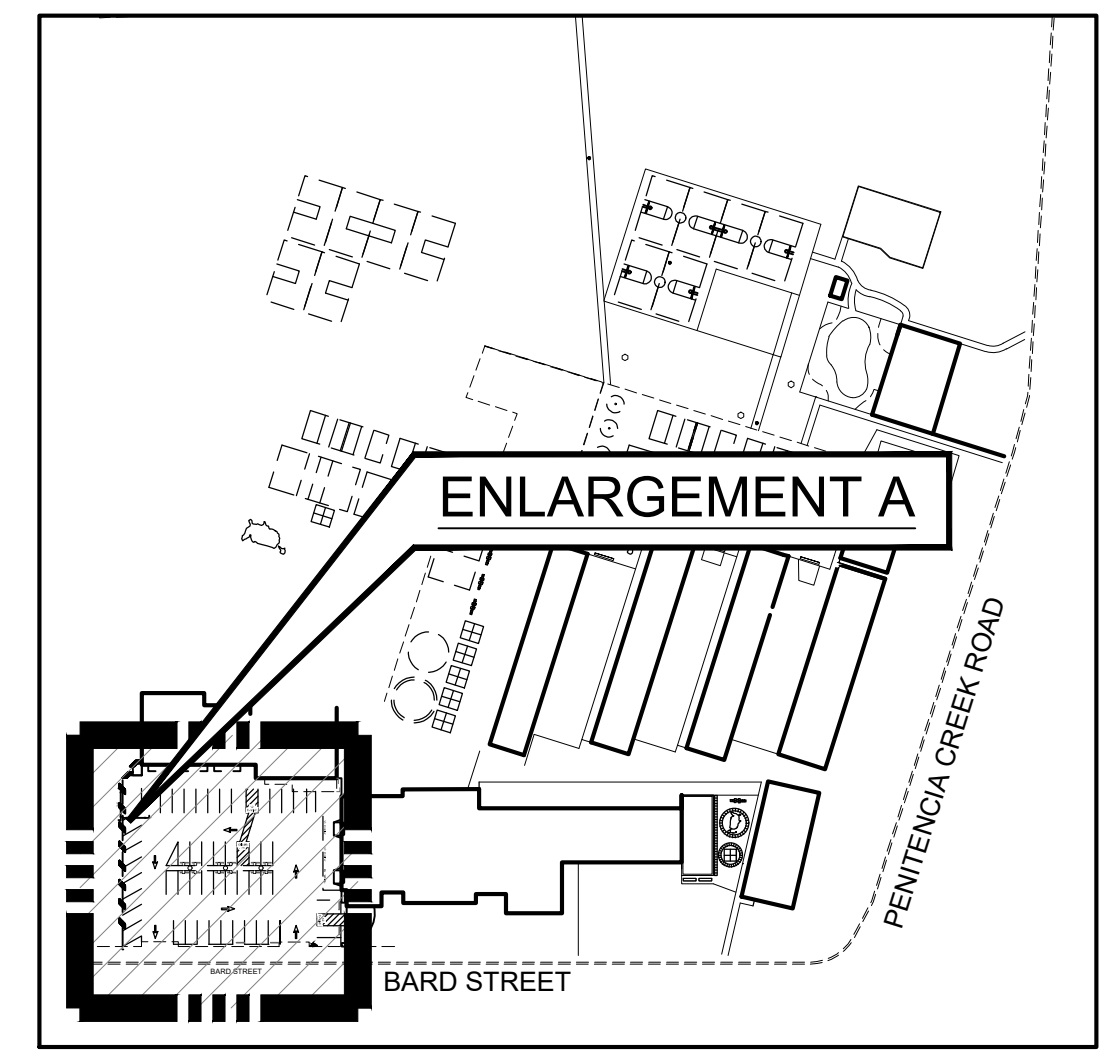
*CORING DATA IS FOR INFORMATION ONLY. EXISTING SECTION MAY VARY FROM SECTION(S) FOUND AT CORING LOCATION(S). FABRIC MAY BE PRESENT IN SECTIONS EVEN IF NOT FOUND AT CORING LOCATION(S).

LEGEND

- PULVERIZE EXISTING PAVEMENT & AB TO A DEPTH OF 18"; REMOVE 6" PULVERIZED BASE LIME/CEMENT TREAT TO A DEPTH OF 12" & PLACE 6" HMA
- REMOVE VEGETATION PRIOR TO SOIL TREATMENT & PAVING
- CONSTRUCT PCC PAD
- HMA FILL
- INSTALL HEADERBOARD (SEE DETAIL SHEET X OF X)
- VAN - ACCESSIBLE PARKING SIGN
- ACCESSIBLE PARKING SIGN
- "UNAUTHORIZED PARKING" SIGN (N)
- INSTALL 4" DIAMETER BOLLARD
- TEMPORARY BENCHMARK
- CLEAN OUT (EX.)
- WATER VALVE (EX.)
- DROP INLET (EX.)
- PCC
- HMA
- AB
- EP
- EG
- TG
- TP
- BORING LOCATION
- DESIGN ELEV.
- EXIST. ELEV.

CONSTRUCTION NOTES:

- 1 REMOVE GATES, CROSS BARS & FENCE FABRIC. REPLACE AFTER PAVING.
- 2 REMOVE VEGETATION PRIOR TO SOIL TREATMENT & PAVING.
- 3 REMOVE & DISPOSE POST BASE.
- 4 SAWCUT ADJACENT TO EX. RAMPS 6" MAX FROM NEAREST EDGE.
- 5 SAWCUT & REMOVE PCC SIDEWALK IN LINE WITH BUILDING EDGE
- 6 PROTECT SOLAR PANELS DURING CONSTRUCTION.
- 7 REMOVE & DISPOSE PARKING BUMPERS.
- 8 CLEAN OUT DRYWELL.
- 9 REMOVE DUMPSTERS & REPLACE AFTER PAVING.
- 10 PROTECT STORAGE CONTAINER DURING CONSTRUCTION.
- 11 CONSTRUCT PCC PAD.
- 12 INSTALL HEADERBOARD.
- 13 RAMP HMA UP & PAVE FLUSH AT ROLL UP DOORS.
- 14 PROTECT EX. DOWNSPOUTS.
- 15 HMA FILL TO PROVIDE 2% CROSS SLOPE.
- 16 UPDATE "UNAUTHORIZED PARKING" SIGN.
- 17 PAVE FLUSH AT BACK OF SIDEWALK.
- 18 REMOVE & DISPOSE OF ACCESSIBLE PARKING SIGNS & POSTS. INSTALL NEW ACCESSIBLE PARKING SIGNS ON BOLLARD SIGN POST.
- 19 PAVE ACCESSIBLE PARKING STALLS AND UNLOADING ZONES TO MAINTAIN 2% MAX. SLOPE IN ANY/ALL DIRECTION.



SITE PLAN
NTS

Pavement Engineering Inc.
You can ride on our reputation
Corporate Office:
3485 Sacramento Drive, Suite A
San Luis Obispo, CA 93401
805.781.2265

TOYON ELEMENTARY SCHOOL
995 BARD STREET
SAN JOSE, CA

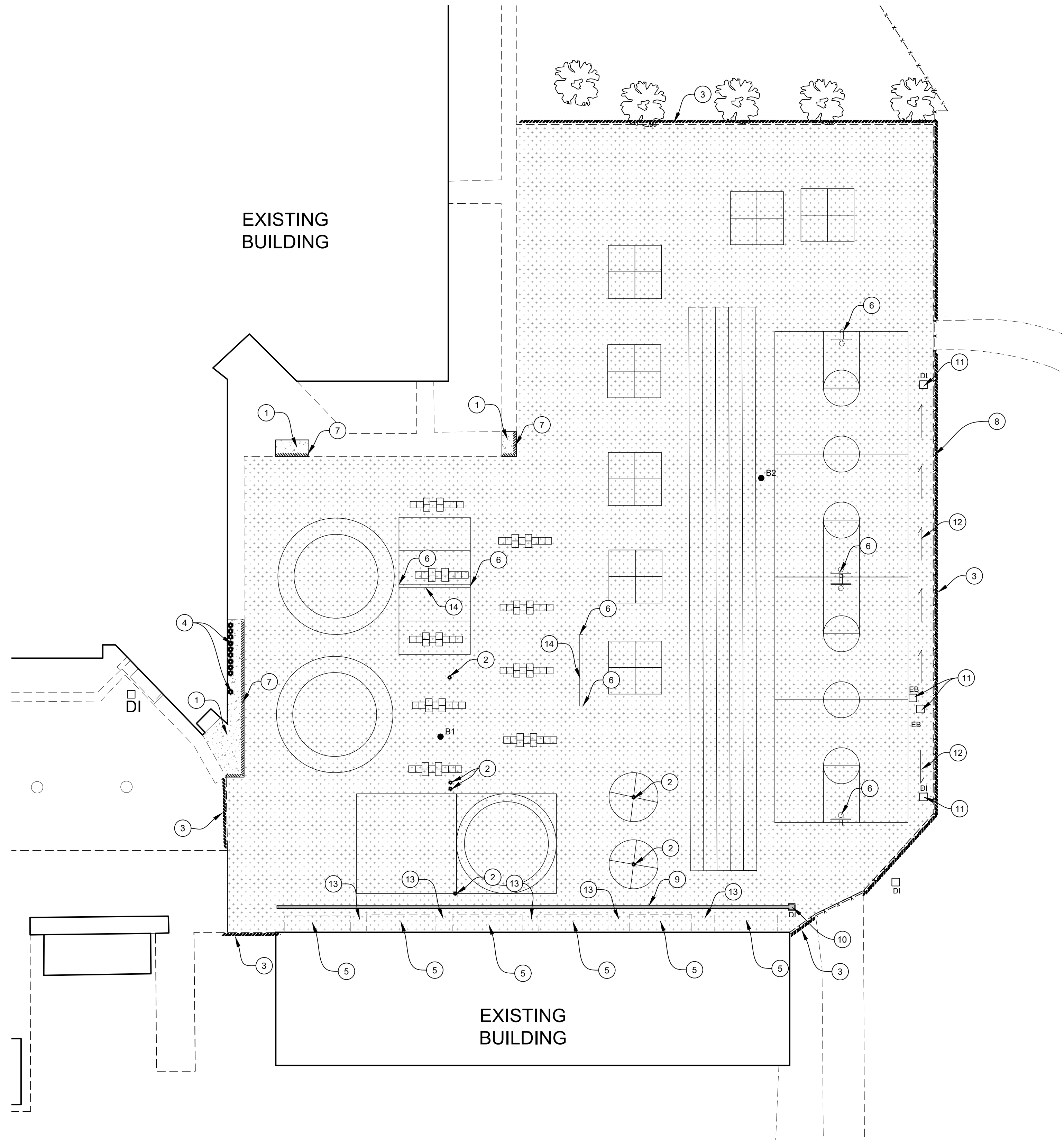
2021 SITE IMPROVEMENT PROJECT
SITE PLAN/ENLARGEMENT A



DRAWN BY: CH
PROJECT NUMBER: 200176-01
SCALE: 1" = 20'
VERIFY SCALE
BAR REPRESENTS 1" ON ORIGINAL
DATE: NOVEMBER 2020
SHEET NUMBER:

Path: Z:\SHAREDIR\DRIVE\ACTIVE PROJECTS\BERRYESSA USD\200176\TASK 01\DRAWINGS\BROOKTREE_TOYON_NORTHWOOD\TOYON_ELEMENTARY.DWG Plot Date: 12/1/2020 11:22 AM

Path: Z:\SHAREDR DRIVE\ACTIVE PROJECTS\BERRYESSA USD\200176\TASK 01\DRAWINGS\BROOKTREE.TOXON, NORTHWOOD\BROOKTREE ELEMENTARY SCHOOL.DWG Plot Date: 12/11/2020 11:20 AM



ENLARGEMENT B
1" = 20'

CORING LOG				
NO.	HMA	AB	R-VALUE	FABRIC (Y/N)
B1	1-3/4"	6"	---	N
B2	1-3/4"	6-1/2"	18	N

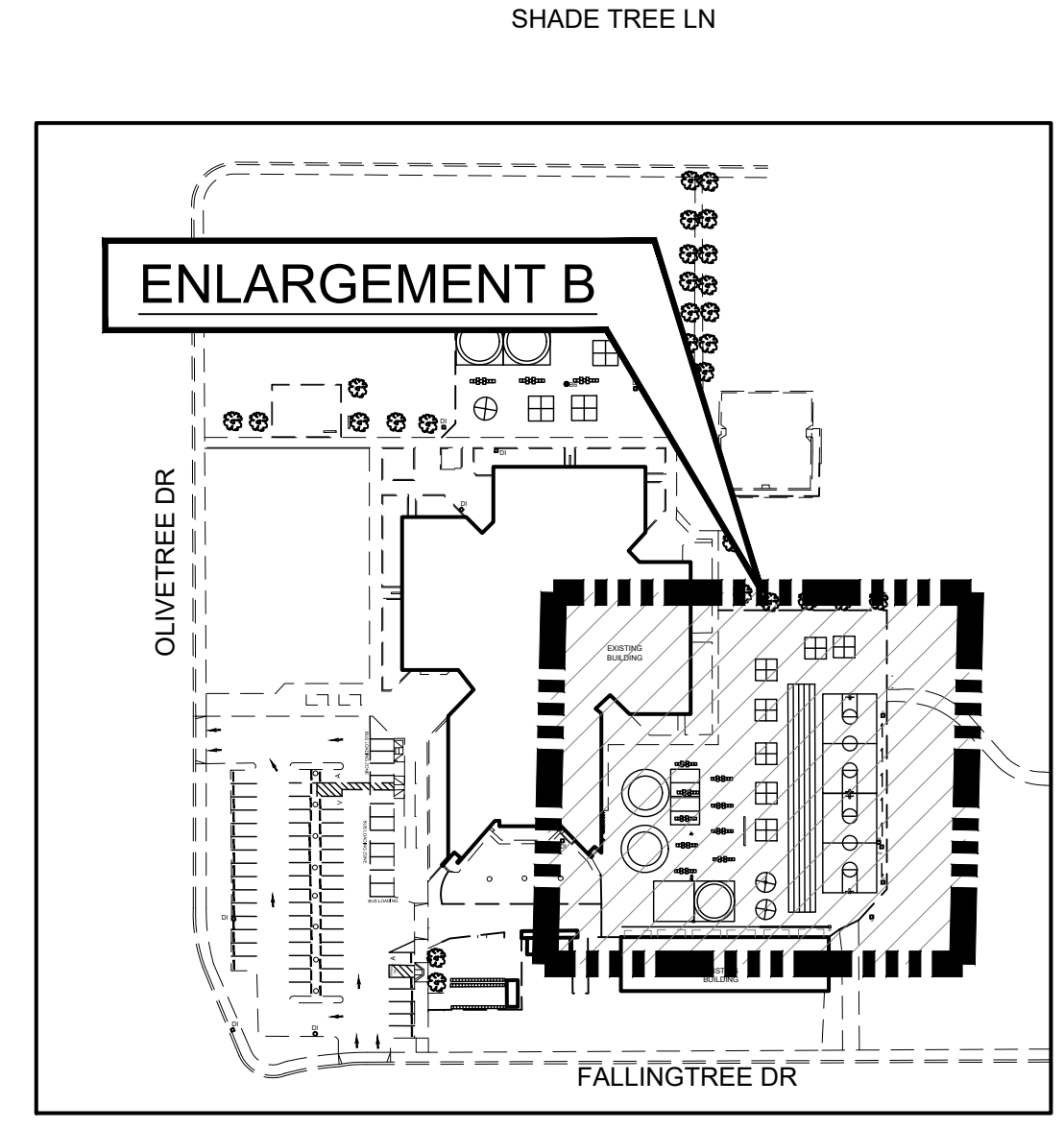
*CORING DATA IS FOR INFORMATION ONLY. EXISTING SECTION MAY VARY FROM SECTION(S) FOUND AT CORING LOCATION(S). FABRIC MAY BE PRESENT IN SECTIONS EVEN IF NOT FOUND AT CORING LOCATION(S).

CONSTRUCTION NOTES:

- 1 REMOVE & REPLACE PCC SIDEWALK.
- 2 REMOVE & DISPOSE OF POST BASES.
- 3 INSTALL 2" X 6" REDWOOD HEADERBOARD.
- 4 PROTECT ELECTRICAL CONDUITS.
- 5 REMOVE & DISPOSE OF EXISTING RAMPS.
- 6 PROTECT POLES DURING CONSTRUCTION.
- 7 CONSTRUCT TYPE A2 INTEGRAL CURB W/ SIDEWALK.
- 8 REMOVE FENCE FABRIC PRIOR TO CONSTRUCTION, REPLACE AFTER PAVING.
- 9 REMOVE EX. TRENCH DRAIN & INSTALL POLYCAST TRENCH DRAIN. TRENCH DRAIN SHALL BE POLYCAST 600 SERIES (CHANNEL UNITS 601 THRU 625). TRENCH DRAIN SHALL HAVE DURAGUARD TRANSVERSE-SLOTTED, HEEL-PROOF GRATE (POLYCAST PART NO. DG0675HD). CONTRACTOR SHALL PROVIDE ALL NECESSARY HARDWARE TO COMPLETE INSTALLATION. CONTRACTOR SHALL INSTALL POLYCAST SYSTEM PER MFG. RECOMMENDATIONS.
- 10 REMOVE EX. DROP INLET & INSTALL POLYCAST 653SB DROP INLET.
- 11 ADJUST UTILITY COVER TO FINISH GRADE.
- 12 GRADE TO DRAIN AS SHOWN.
- 13 MAINTAIN 2% LANDING IN ANY/ALL DIRECTION AT BOTTOM OF EACH RAMP.
- 14 REMOVE & DISPOSE OF WOODEN BALL WALL.

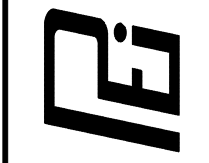
LEGEND

- PULVERIZE EXISTING AC & AB TO A DEPTH OF 18". REMOVE 6" PULVERIZED BASE LIME/CEMENT TREAT TO A DEPTH OF 12" & PLACE 6" HMA
- REMOVE & REPLACE PCC FACILITIES (SEE PLAN)
- INSTALL HEADERBOARD
- TYPE A2 INTEGRAL CURB
- AB AGGREGATE BASE
- HMA HOT MIX ASPHALT
- DI DROP INLET (EX.)
- PCC PORTLAND CEMENT CONCRETE
- EB ELECTRICAL BOX
- XX BORING LOCATION



SITE PLAN
NTS

Pavement Engineering Inc.
You can ride on our reputation



Corporate Office:
3485 Sacramento Drive, Suite A
San Luis Obispo, CA 93401
805.781.2265

SAN JOSE, CA

BROOKTREE ELEMENTARY SCHOOL

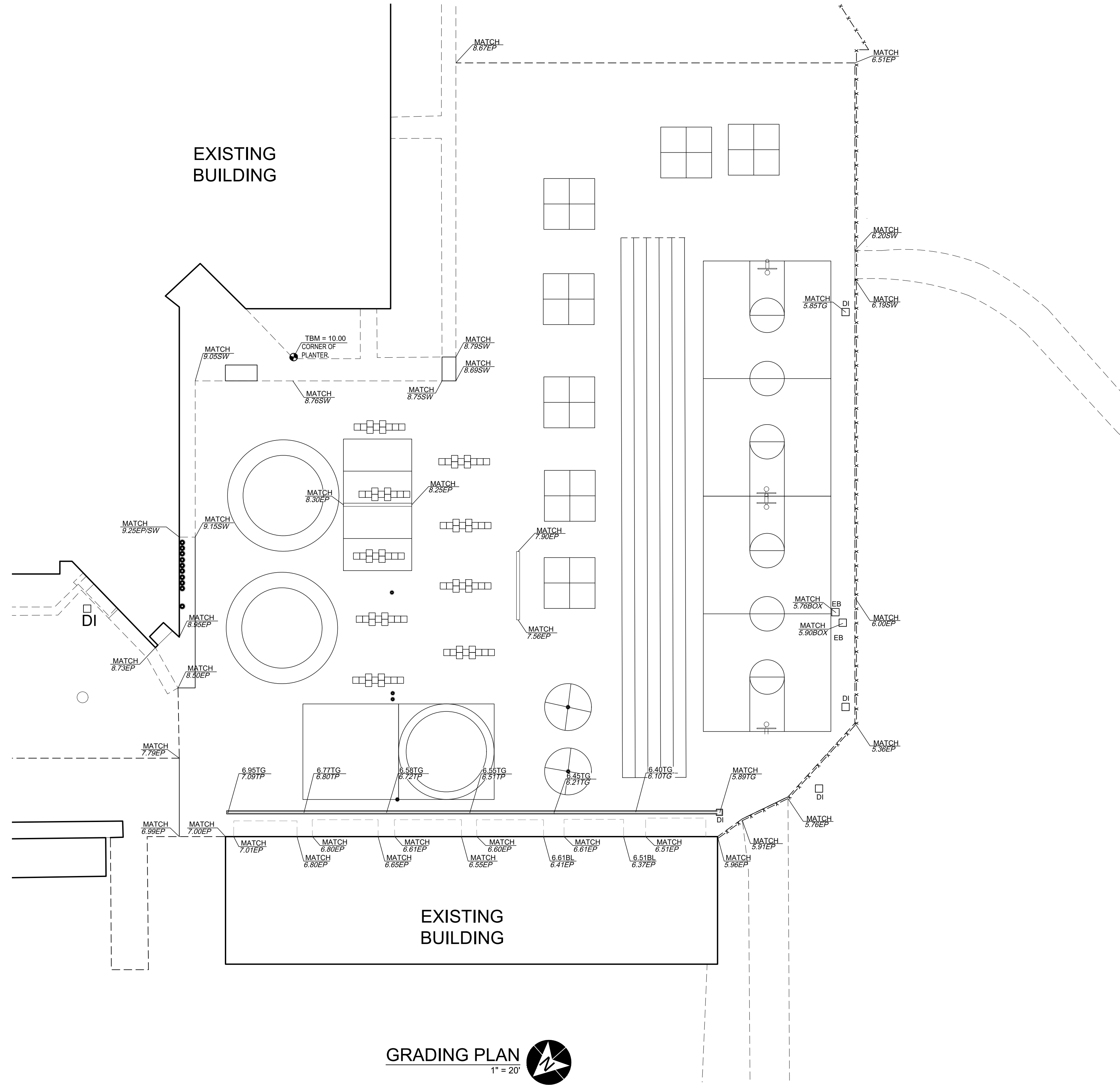
1781 OLIVETREE DRIVE

2021 PAVEMENT IMPROVEMENT PROJECT
SITE PLAN/ENLARGEMENT B



DRAWN BY: **TLS**
PROJECT NUMBER: **200176-01**
SCALE: **1" = 20'**
VERIFY SCALE
BAR REPRESENTS
1" ON ORIGINAL
DATE: **NOVEMBER 2020**
SHEET NUMBER:

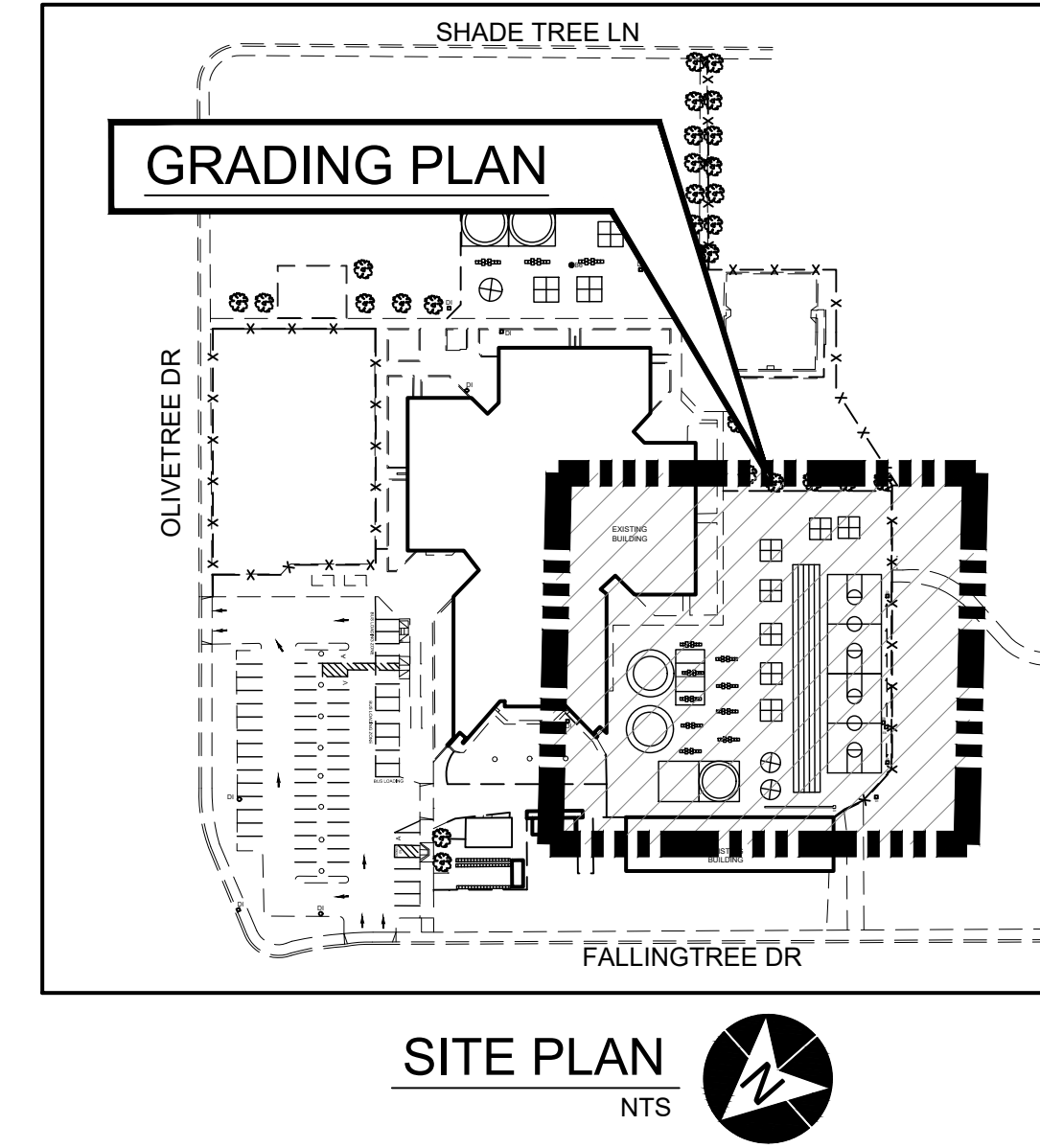
Path: Z:\SHAREDR\DRIVE\ACTIVE PROJECTS\BERRYessa\USD2001761\TASK 01\DRAWINGS\BROOKTREE.TOXON, NORTHWOOD\BROOKTREE ELEMENTARY SCHOOL.DWG Plot Date: 12/11/2020 11:20 AM



GRADING PLAN
1" = 20'

LEGEND

- DI DROP INLET (EX.)
- EP EDGE OF PAVEMENT
- TG TOP OF GRATE
- TP TOP OF PAVEMENT
- EB ELECTRICAL BOX
- SW SIDEWALK
- ⊙ TEMPORARY BENCHMARK
- XX.XX DESIGN ELEV.
- XX.XX EXIST. ELEV.



Pavement Engineering Inc.
You can ride on our reputation
Corporate Office:
3485 Sacramento Drive, Suite A
San Luis Obispo, CA 93401
805.781.2265

BROOKTREE ELEMENTARY SCHOOL
1781 OLIVETREE DRIVE
SAN JOSE, CA
2021 PAVEMENT IMPROVEMENT PROJECT
SITE PLAN/GRADING PLAN

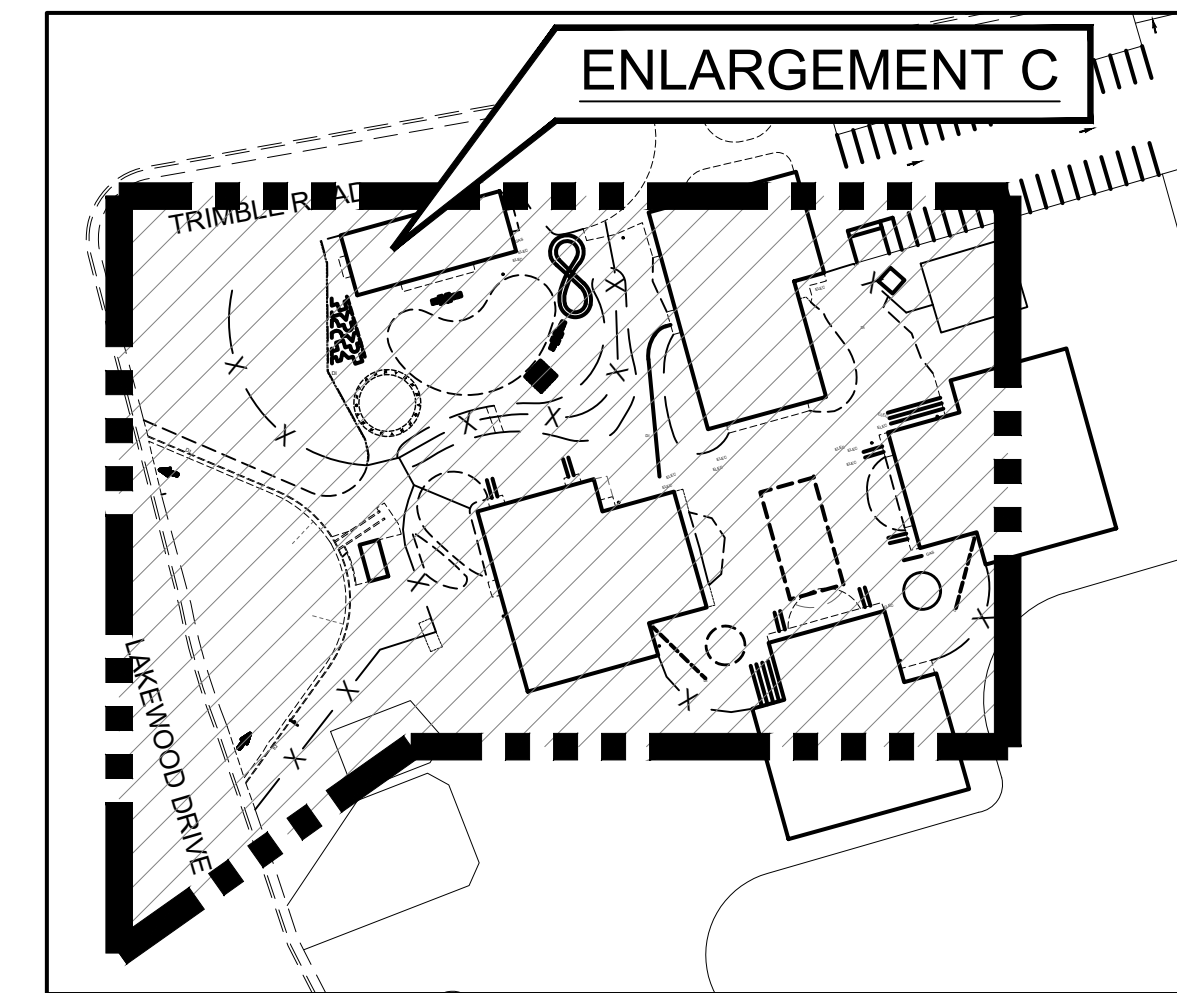


DRAWN BY: TLS
PROJECT NUMBER: 200176-01
SCALE: 1" = 20'
VERIFY SCALE
BAR REPRESENTS 1" ON ORIGINAL
DATE: NOVEMBER 2020
SHEET NUMBER:

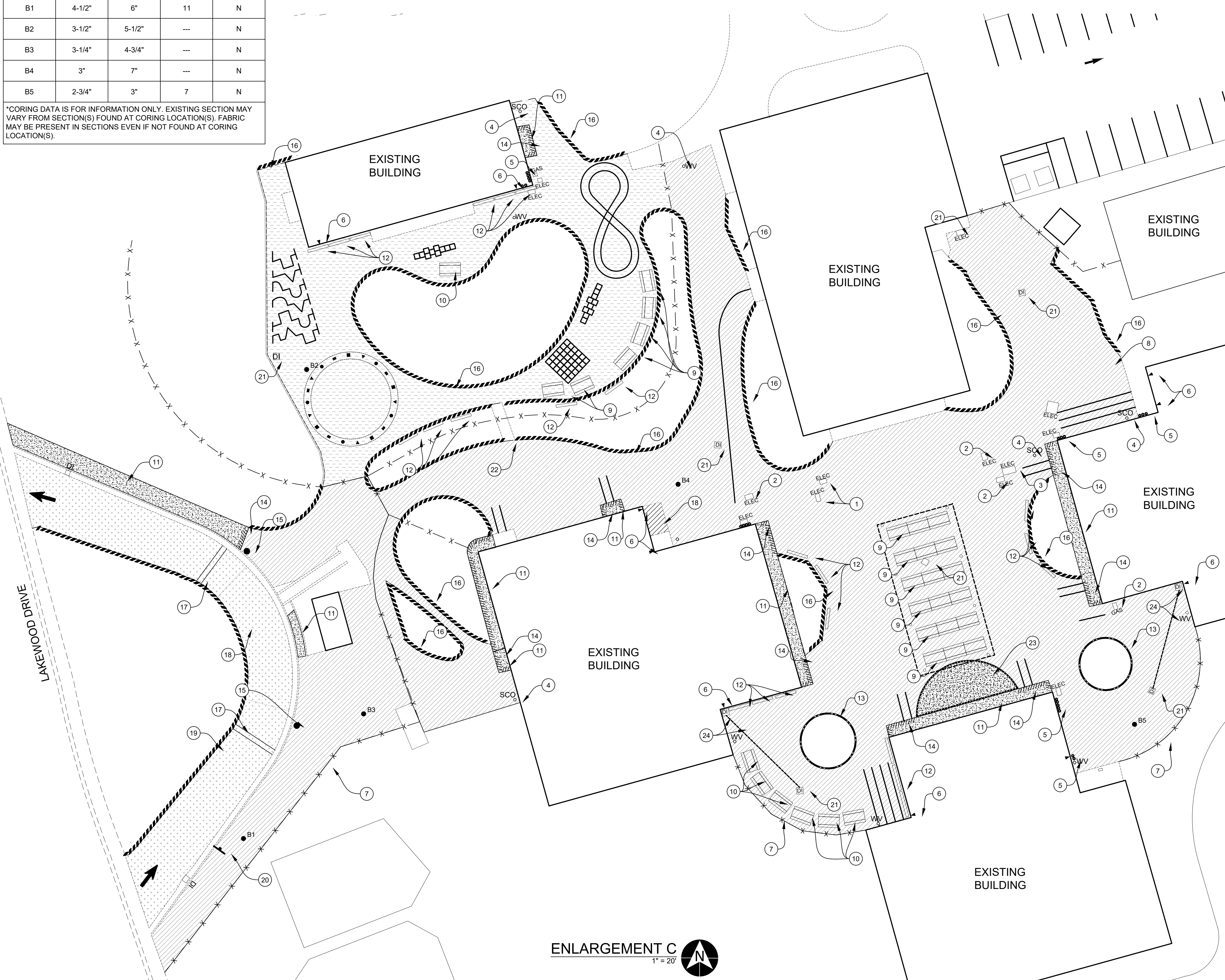
CORING LOG

NO.	HMA	AB	R-VALUE	FABRIC (Y/N)
B1	4-1/2"	6"	11	N
B2	3-1/2"	5-1/2"	---	N
B3	3-1/4"	4-3/4"	---	N
B4	3"	7"	---	N
B5	2-3/4"	3"	7	N

*CORING DATA IS FOR INFORMATION ONLY. EXISTING SECTION MAY VARY FROM SECTION(S) FOUND AT CORING LOCATION(S). FABRIC MAY BE PRESENT IN SECTIONS EVEN IF NOT FOUND AT CORING LOCATION(S).



SITE PLAN
NTS



ENLARGEMENT C
1" = 20'

CONSTRUCTION NOTES:

- 1 REPLACE UTILITY BOX WITH B36-61D BOX.
- 2 REPLACE UTILITY BOX WITH B40D BOX.
- 3 REPLACE UTILITY BOX WITH B52-62G BOX.
- 4 REPLACE VALVE COVER WITH G5 VALVE BOX.
- 5 PROTECT ELECTRIC PIPES.
- 6 PROTECT DOWNSPOUTS.
- 7 REMOVE FENCE FABRIC & REPLACE AFTER PAVING, SAWCUT ALONG FENCELINE.
- 8 PRUNE & REMOVE TREE ROOTS.
- 9 REMOVE TABLES PRIOR TO PAVING, REPLACE & REFASTEN WHEN PAVING COMPLETE.
- 10 REMOVE & DISPOSE OF TABLES & FOOTINGS.
- 11 REPLACE W/ PCC SIDEWALK @ 2% CROSS SLOPE.
- 12 REPLACE BENCH W/ WABASH VALLEY OUTDOOR 8' BENCH, BLUE COLOR W/ BLACK INGROUND LEGS, MODEL NO. DS410D
- 13 REMOVE EXISTING & INSTALL PCC RETAINING CURB.
- 14 CONSTRUCT TYPE A2 INTEGRAL CURB W/ SIDEWALK.
- 15 PROTECT LIGHT STANDARD.
- 16 INSTALL 2"x6" REDWOOD HEADERBOARD.
- 17 REMOVE HMA SPEED HUMP & REPLACE AFTER PAVING.
- 18 REMOVE & DISPOSE PCC & REPLACE W/ TREATED BASE & HMA.
- 19 REMOVE HMA BERM PRIOR TO PAVING & REPLACE W/ 2"x6" REDWOOD HEADERBOARD.
- 20 REMOVE SIGN POST & REPLACE AFTER PAVING.
- 21 ADJUST TO FINISH GRADE.
- 22 SAWCUT & REMOVE EDGE OF PCC SIDEWALK; PAVE FLUSH.
- 23 REMOVE EXISTING SIDEWALK & VEGETATION; CAP OFF IRRIGATION LINES & REPLACE WITH TYPE A1 INTEGRAL CURB & SIDEWALK.
- 24 INSTALL CHRIST V64 DROP INLET W/HEAVY DUTY GRATE; INSTALL 6" PVC DRAIN LINE. CONNECT TO NEW & EXISTING DROP INLETS

LEGEND

- PULVERIZE EX. AC & AB TO A DEPTH OF 18"; REMOVE 6" PULVERIZED BASE, LIME/CEMENT TREAT TO A DEPTH OF 12" & PLACE 6" HMA
- PULVERIZE EX. AC & AB TO A DEPTH OF 12"; REMOVE 4" PULVERIZED BASE, LIME/CEMENT TREAT TO A DEPTH OF 8" & PLACE 4" HMA
- (ALT. 1) PULVERIZE EX. AC & AB TO A DEPTH OF 12"; REMOVE 4" PULVERIZED BASE, LIME/CEMENT TREAT TO A DEPTH OF 8" & PLACE 4" HMA
- REPLACE W/ PCC SIDEWALK @ 2% CROSS SLOPE
- INSTALL HEADERBOARD
- TYPE A1 INTEGRAL CURB
- TYPE A2 INTEGRAL CURB
- CONSTRUCT NEW PCC RETAINING CURB
- ELECTRICAL PIPE
- DOWNSPOUT
- LIGHT STD.
- SIGN POST
- CLEAN OUT (EX.)
- WATER VALVE (EX.)
- DROP INLET (EX.)
- BORING LOCATION

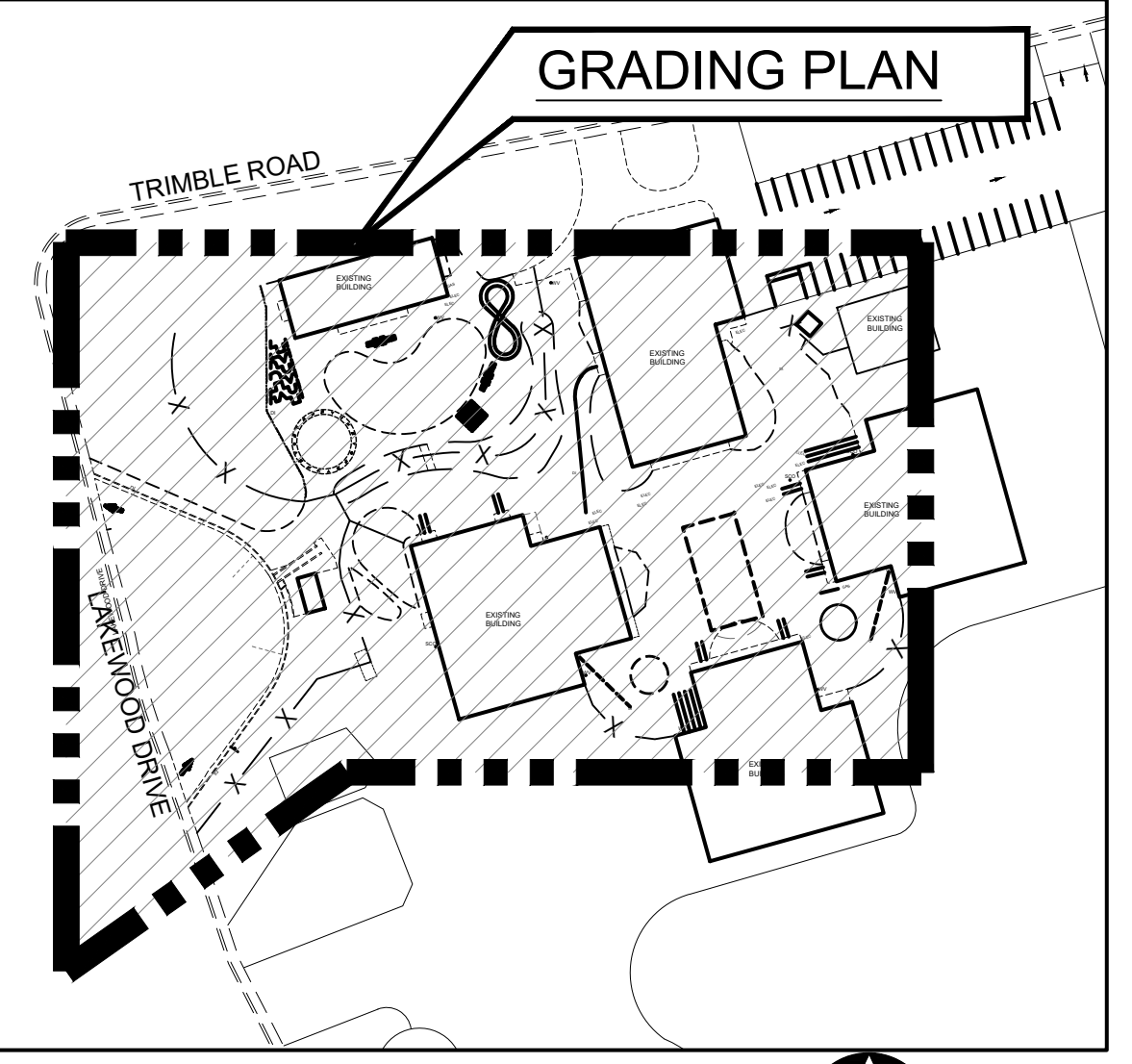
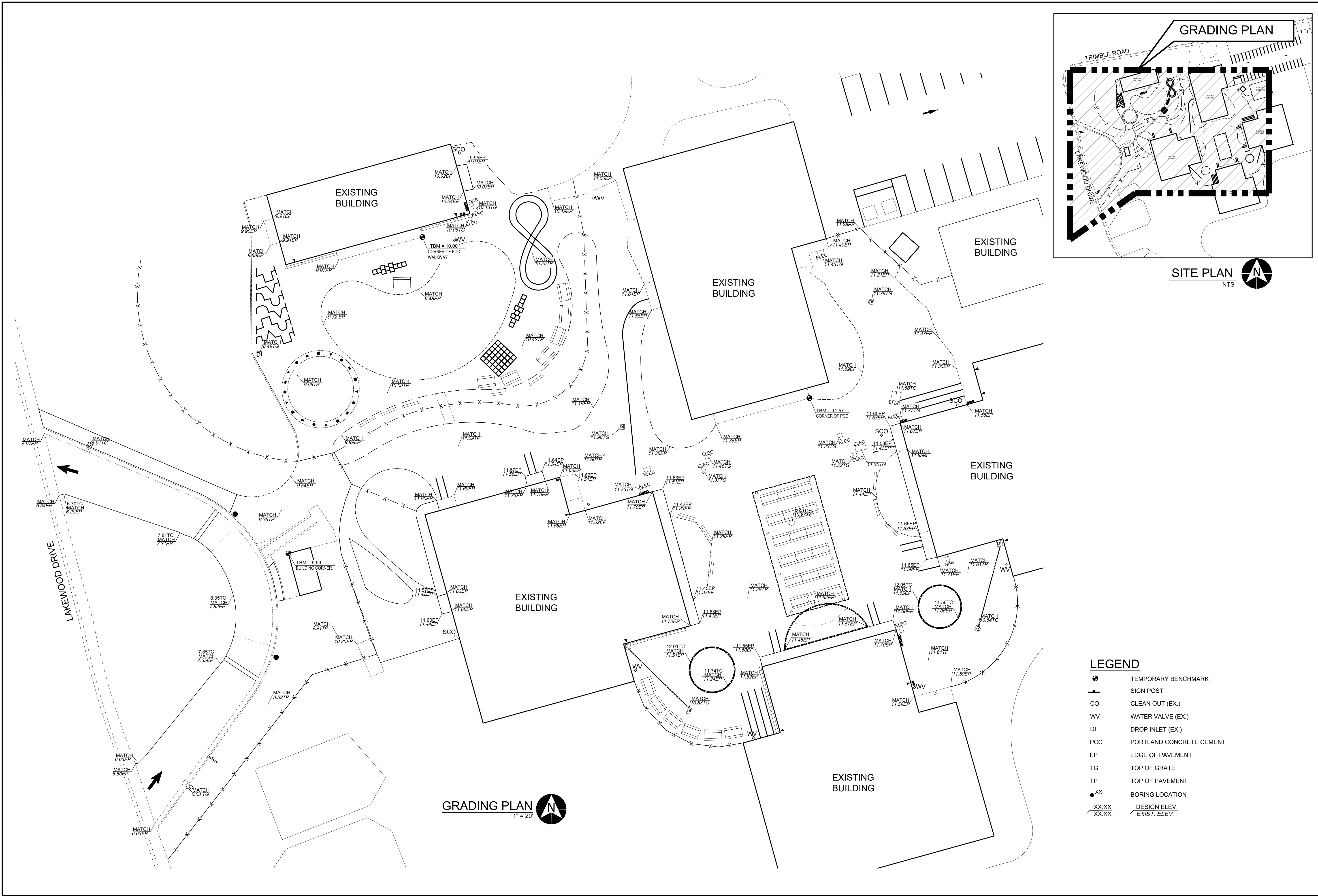
Pavement Engineering Inc.
You can ride on our reputation
Corporate Office:
3485 Sacramento Drive, Suite A
San Luis Obispo, CA 93401
805.781.2265

NORTHWOOD ELEMENTARY SCHOOL
2760 TRIMBLE RD
SAN JOSE, CA
2021 SITE IMPROVEMENT PROJECT
SITE PLAN & ENLARGEMENT C



DRAWN BY: CH
PROJECT NUMBER: 200176
SCALE: 1" = 20'
VERIFY SCALE
BAR REPRESENTS 1" ON ORIGINAL
DATE: NOVEMBER 2020
SHEET NUMBER:

Path: Z:\SHAREDIR\DRIVE\ACTIVE PROJECTS\BERRYESSA\USD\200176\TASK 01\DRAWINGS\BROCKTREE_TOYON_NORTHWOODNORTHWOOD ELEMENTARY.DWG Plot Date: 12/1/2020 11:21 AM



SITE PLAN
NTS

LEGEND

●	TEMPORARY BENCHMARK
⊥	SIGN POST
CO	CLEAN OUT (EX.)
WV	WATER VALVE (EX.)
DI	DROP INLET (EX.)
PCC	PORTLAND CONCRETE CEMENT
EP	EDGE OF PAVEMENT
TG	TOP OF GRATE
TP	TOP OF PAVEMENT
● XX	BORING LOCATION
XX.XX	DESIGN ELEV.
XX.XX	EXIST. ELEV.

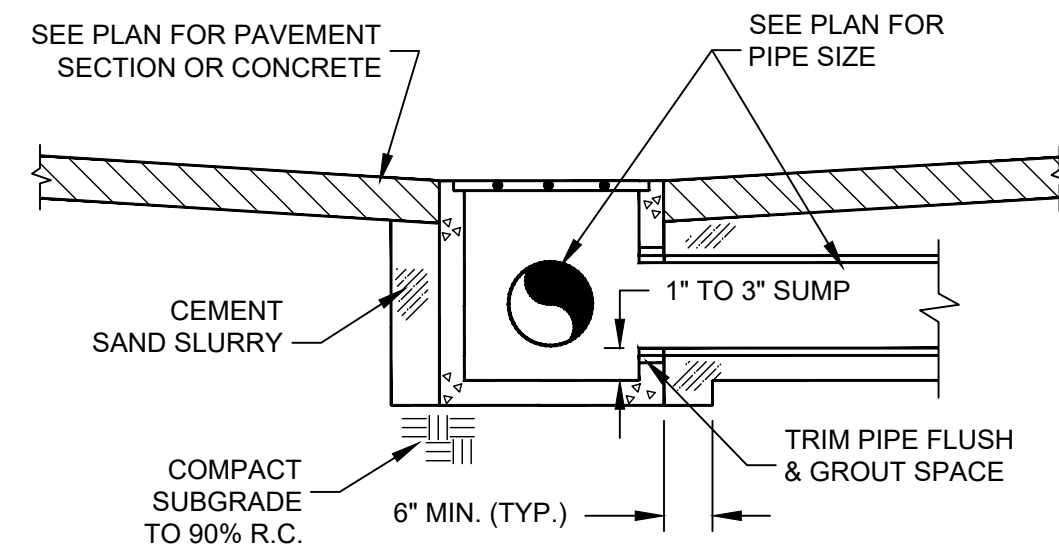
GRADING PLAN
1" = 20'

Pavement Engineering Inc.
 You can ride on our reputation
 Corporate Office:
 3485 Sacramento Drive, Suite A
 San Luis Obispo, CA 93401
 805.781.2265

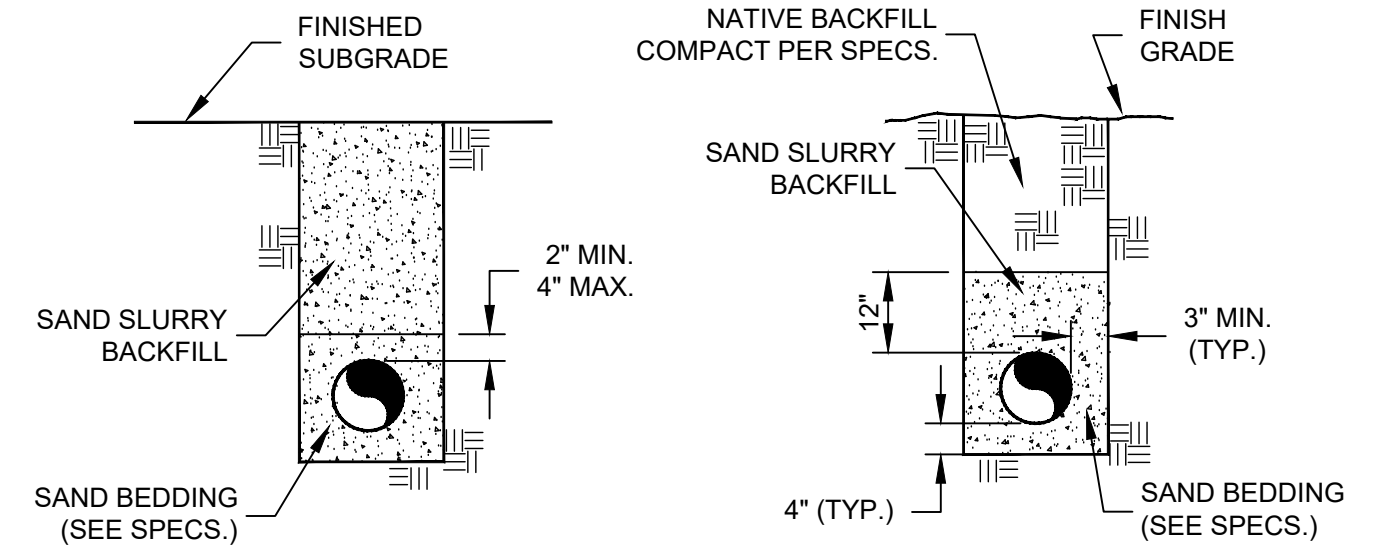
NORTHWOOD ELEMENTARY SCHOOL
 2760 TRIMBLE RD
 SAN JOSE, CA
2021 SITE IMPROVEMENT PROJECT
 GRADING PLAN



DRAWN BY: CH
 PROJECT NUMBER: 200176
 SCALE: 1" = 20'
 VERIFY SCALE
 BAR REPRESENTS 1" ON ORIGINAL
 DATE: OCT. 2020
 SHEET NUMBER:



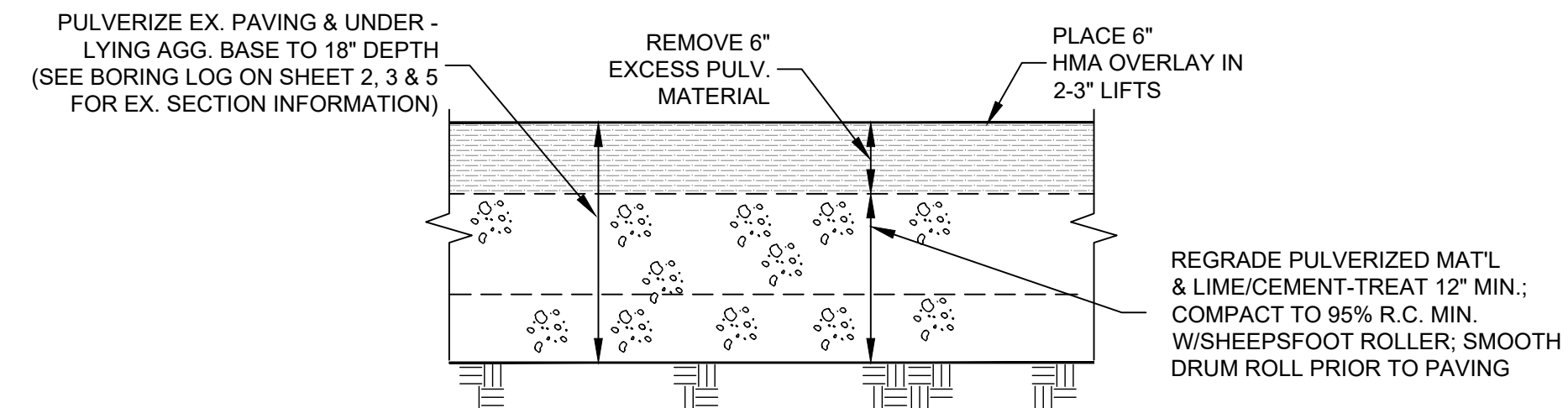
DROP INLET INSTALLATION DETAIL
NTS



BACKFILL UNDER PAVEMENT **BACKFILL UNDER LANDSCAPE**

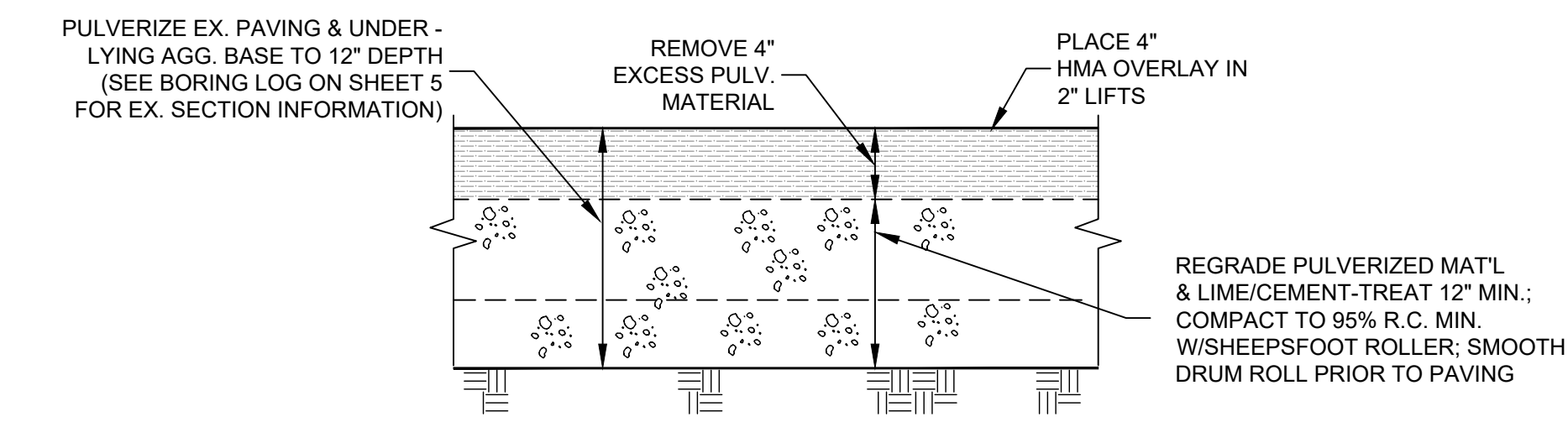
NOTES:
1) "BACKFILL UNDER PAVEMENT" SHALL APPLY IN ALL AREAS OF EXISTING &/OR NEW PAVEMENT AND ADJACENT, PAVED WALKWAYS. "BACKFILL UNDER LANDSCAPE" SHALL APPLY IN ALL LANDSCAPE PLANTER AREAS AND ALL AREAS TO REMAIN UNPAVED ACCORDING TO THE PROJECT PLANS.
2) SEE PLANS FOR PIPE SIZES.

TYPICAL TRENCH BACKFILL DETAIL
NTS



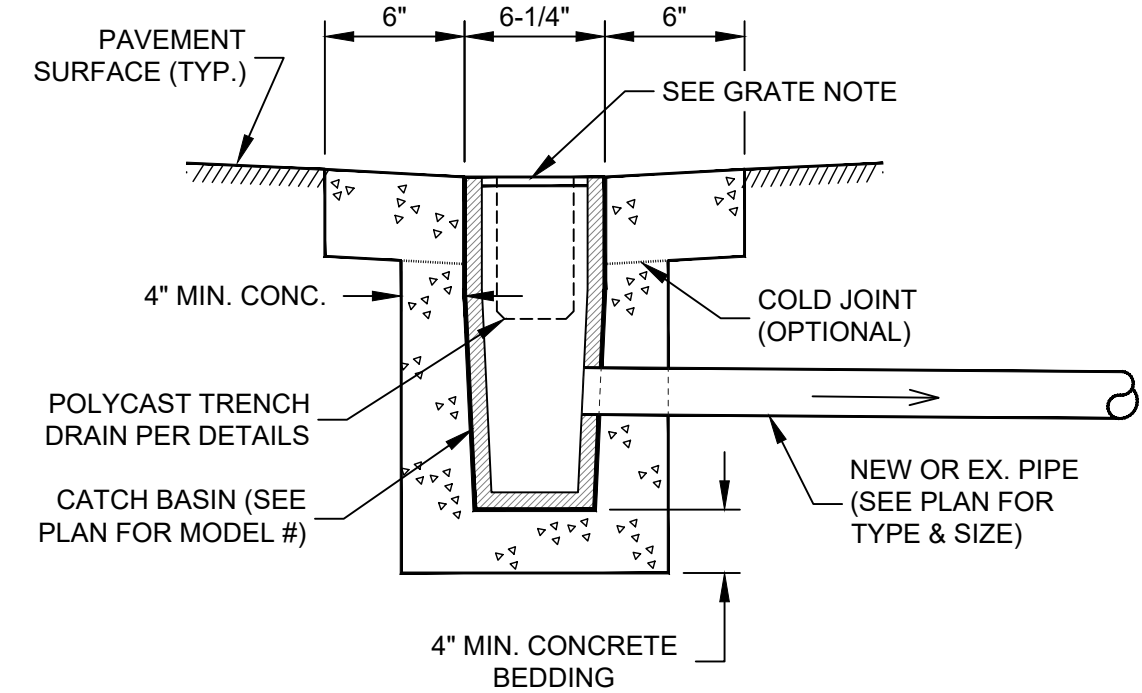
NOTES:
1. UNDERGROUND SERVICE ALERT (U.S.A.) SHALL BE NOTIFIED PRIOR TO ANY EXCAVATION ON THIS PROJECT. A REFERENCE NUMBER FROM U.S.A SHALL BE PROVIDED TO CLIENT'S REPRESENTATIVE BEFORE ANY UNDERGROUND EXCAVATION WILL BE ALLOWED.
2. CONTRACTOR SHALL CONTACT BERRYESSA UNION SCHOOL DISTRICT, AND SCHEDULE WATER TO BE SHUT OFF PRIOR TO LIME/CEMENT-TREATING AND TURNED ON PRIOR TO PAVING TO AVOID PAVING OVER DAMAGED IRRIGATION LINES.
3. SEE SPECIFICATIONS FOR SOIL TREATMENT INFORMATION.

PULVERIZE 18", REGRADE & REMOVE 6" EXCESS MATERIAL, LIME/CEMENT TREAT 12" & PLACE 6" HMA
NTS



NOTES:
1. UNDERGROUND SERVICE ALERT (U.S.A.) SHALL BE NOTIFIED PRIOR TO ANY EXCAVATION ON THIS PROJECT. A REFERENCE NUMBER FROM U.S.A SHALL BE PROVIDED TO CLIENT'S REPRESENTATIVE BEFORE ANY UNDERGROUND EXCAVATION WILL BE ALLOWED.
2. CONTRACTOR SHALL CONTACT BERRYESSA UNION SCHOOL DISTRICT, AND SCHEDULE WATER TO BE SHUT OFF PRIOR TO LIME/CEMENT-TREATING AND TURNED ON PRIOR TO PAVING TO AVOID PAVING OVER DAMAGED IRRIGATION LINES.
3. SEE SPECIFICATIONS FOR SOIL TREATMENT INFORMATION.

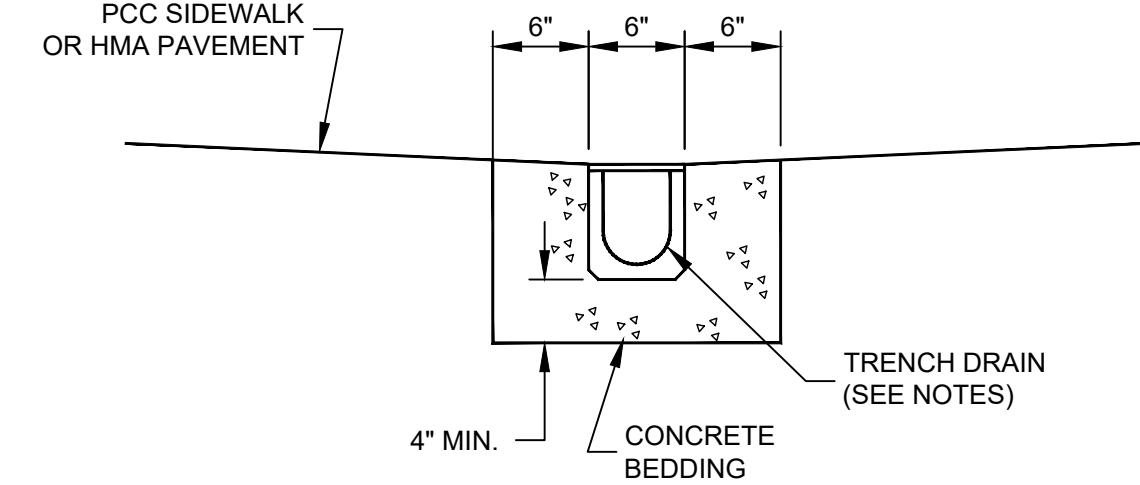
PULVERIZE 12", REGRADE & REMOVE 4" EXCESS MATERIAL, LIME/CEMENT TREAT 8" & PLACE 4" HMA
NTS



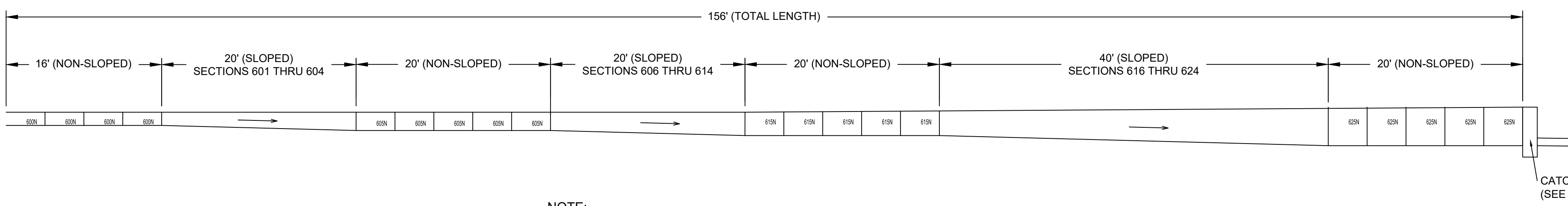
GRATE NOTE:
GRATE ON POLYCAST CATCH BASIN TO MATCH STYLE OF GRATE ON ADJACENT TRENCH DRAIN (UNLESS SHOWN OTHERWISE ON PLAN).

POLYCAST CATCH BASIN DETAIL
NTS

TRENCH DRAIN NOTES:
1. TRENCH DRAIN SHALL BE POLYCAST 600 SERIES CHANNELS (IN 2' OR 4' LENGTHS - SEE TRENCH DRAIN PROFILE). ALL SECTIONS SHALL INCLUDE POLYGUARD LIP PROTECTION.
2. TRENCH DRAIN GRATE SHALL BE DOUBLE STAINLESS STEEL PERFORATED GRATE (PART NO. DG0657R), A HEEL-PROOF GRATING THAT MEETS ADA PATH OF TRAVEL REQUIREMENTS.
3. ALL GRATES SHALL BE SECURED W/GRATING HOLD-DOWN DEVICE (PART NO. DA0642S).

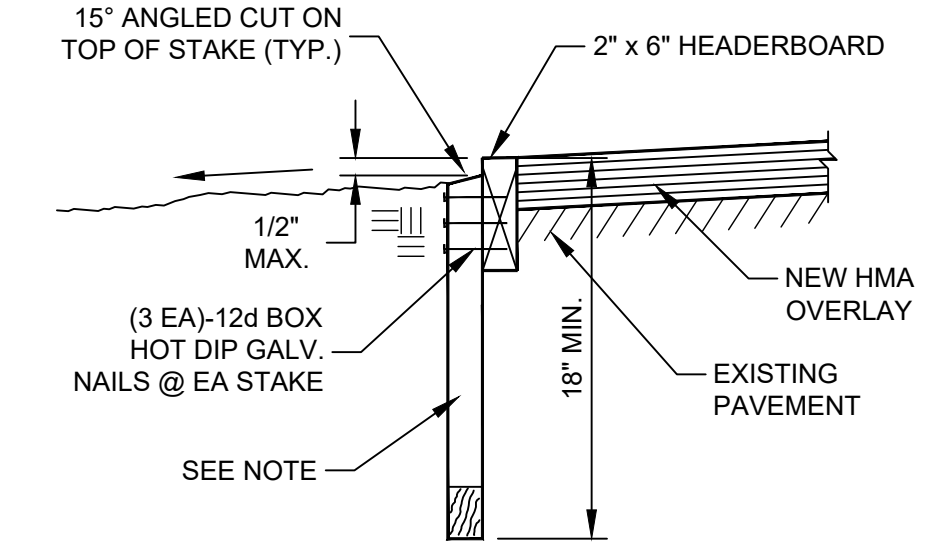


TRENCH DRAIN INSTALLATION
NTS



NOTE:
TRENCH DRAIN SHALL BE POLYCAST 600 SERIES PRE-SLOPED TRENCH DRAIN IN 4' LENGTHS (UNLESS SHOWN OTHERWISE) W/DURAGARD COMPOSITE FRAME (PART NO. DG0700PE) & W/GRAY IRON SLOTTED GRATE (PART NO. DG0641). GRATING HOLD-DOWN DEVICE (PART NO. DA0642BH) SHALL BE USED TO SECURE GRATE IN PLACE.

TRENCH DRAIN PROFILE
NTS



NOTE:
2" x 4" x 18" MIN. STAKES @ 32" O.C. & 2" x 6" x 18" MIN. STAKES @ HEADERBOARD JOINTS

2x6 HEADERBOARD DETAIL
NTS

Pavement Engineering Inc.
You can ride on our reputation

Corporate Office:
3485 Sacramento Drive, Suite A
San Luis Obispo, CA 93401
805.781.2265



BERRYESSA UNION SCHOOL DISTRICT
2021 PAVEMENT IMPROVEMENT PROJECT

DETAILS

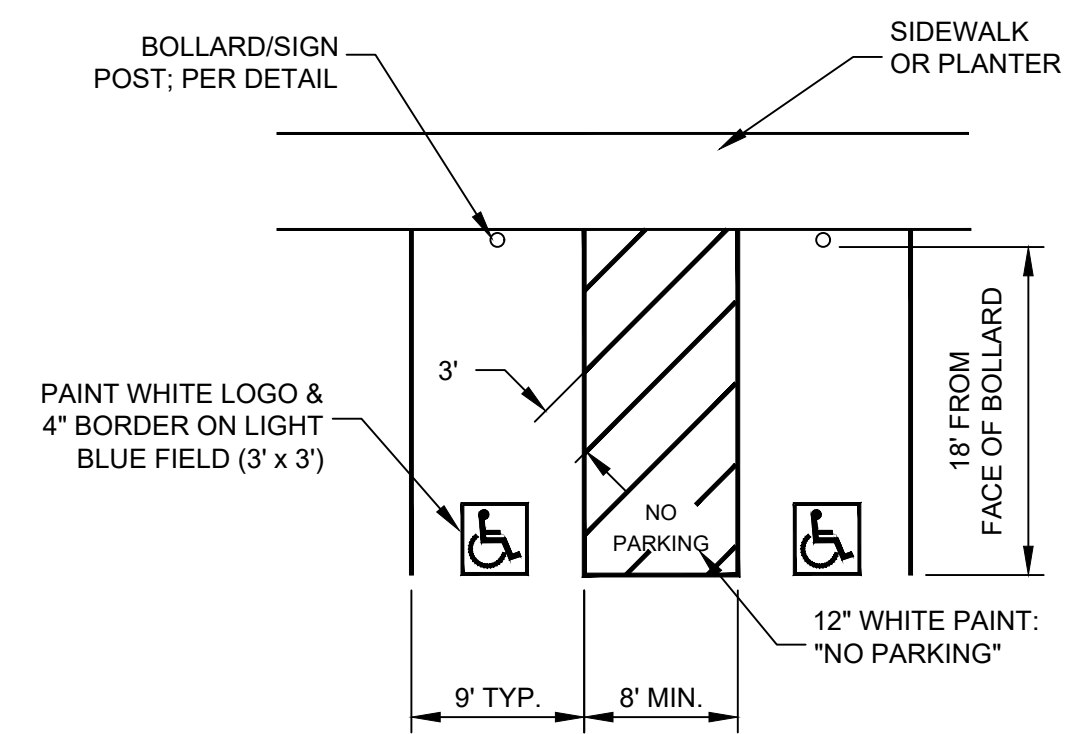


DRAWN BY: **CH**
PROJECT NUMBER: **200176**
SCALE: **NO SCALE**
VERIFIED SCALE: **1" ON ORIGINAL**
DATE: **NOVEMBER 2020**
SHEET NUMBER:

P:\11_Z\SHARED\DRIVE\PROJECTS\BERRYESSA USD\200176\TASK\1\DRAININGS\BROCKTREE_T0YON_NORTHWOOD\200176-01_DETAILS.DWG Pld Date: 12/1/2020 11:29 AM

NOTES:

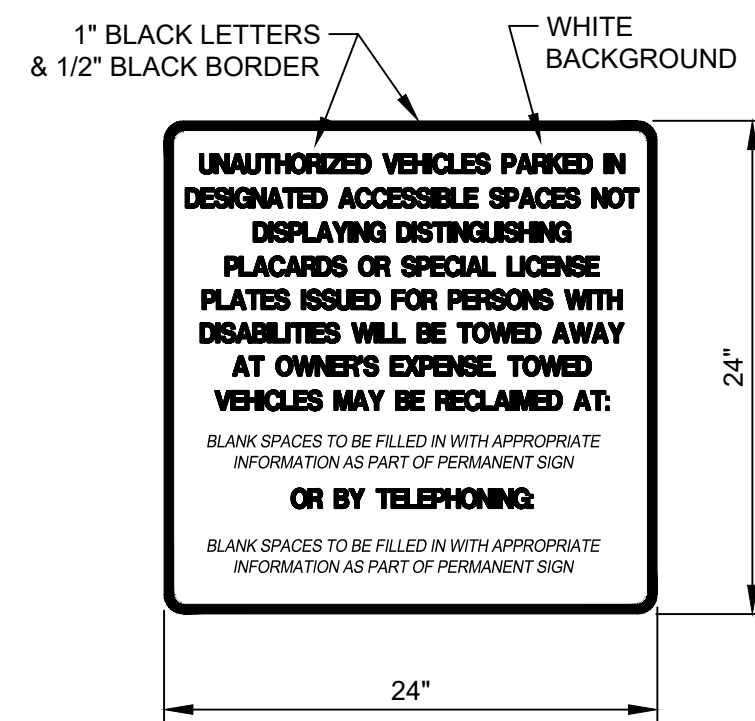
1. ACCESSIBLE PARKING SPACES TO BE CONSTRUCTED PER SECTION 11B-502 OF THE CBC.
2. OUTSIDE LINE OF UNLOADING ZONE TO BE PAINTED IN BLUE. INTERIOR CROSS-HATCHING LINES TO BE PAINTED IN EITHER BLUE OR WHITE.



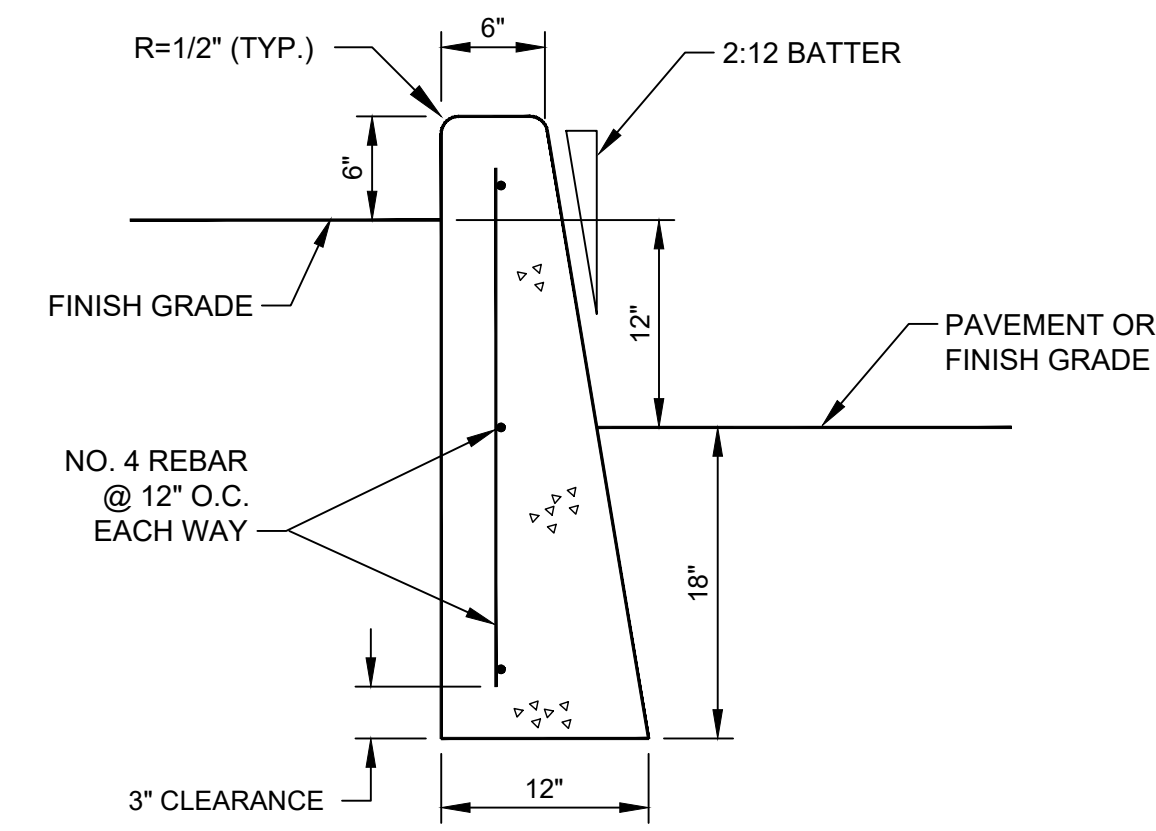
VAN-ACCESSIBLE & ACCESSIBLE PARKING SPACE DETAIL
(TITLE 24 REGULATIONS) NTS

NOTE:

UNAUTHORIZED PARKING SIGN SHALL BE MOUNTED @ EACH DRIVEWAY ENTRANCE SO AS TO BE VISIBLE TO DRIVERS AS THEY ENTER THE SITE, OR IMMEDIATELY ADJACENT TO ADA PARKING SPACE(S) WITH UNOBSTRUCTED VIEW FROM EACH ADA PARKING SPACE.

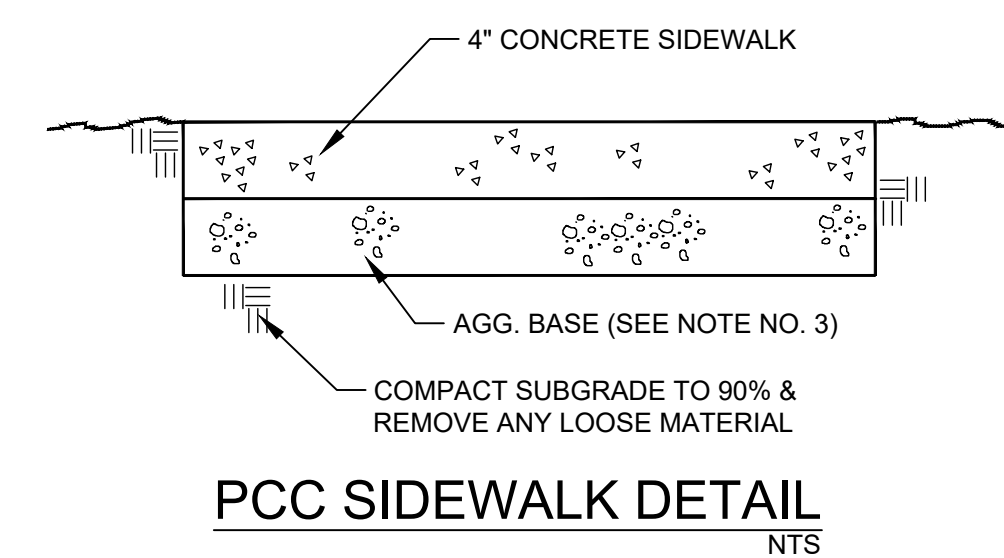


"UNAUTHORIZED PARKING" SIGN @ SITE ENTRANCE
NTS

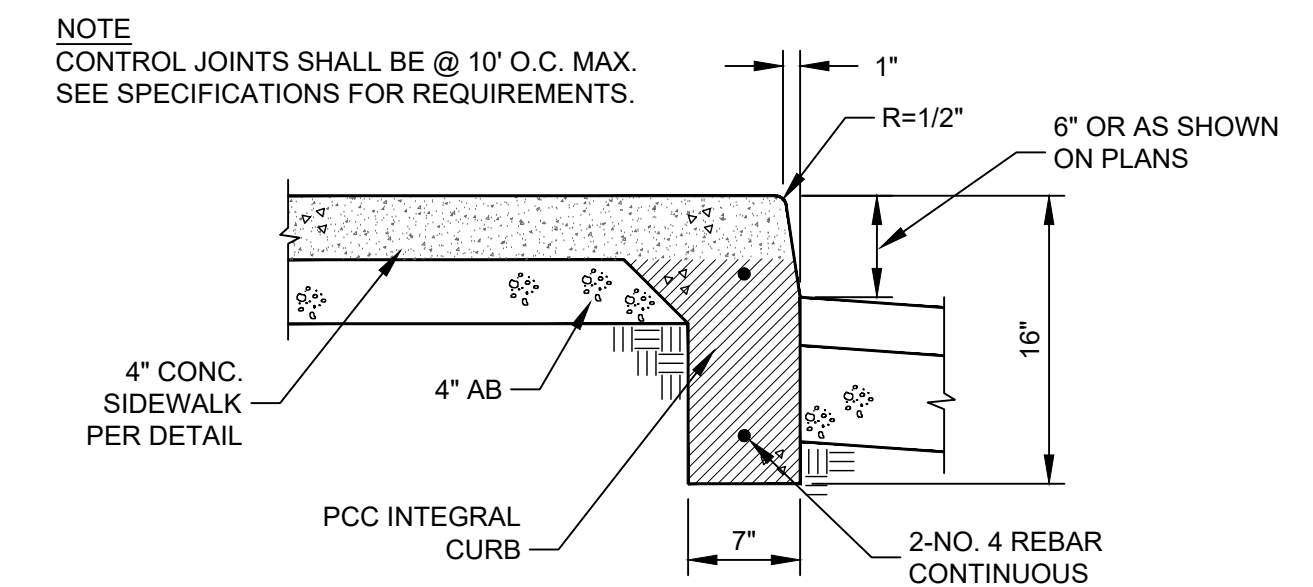


PCC RETAINING CURB DETAIL
NTS

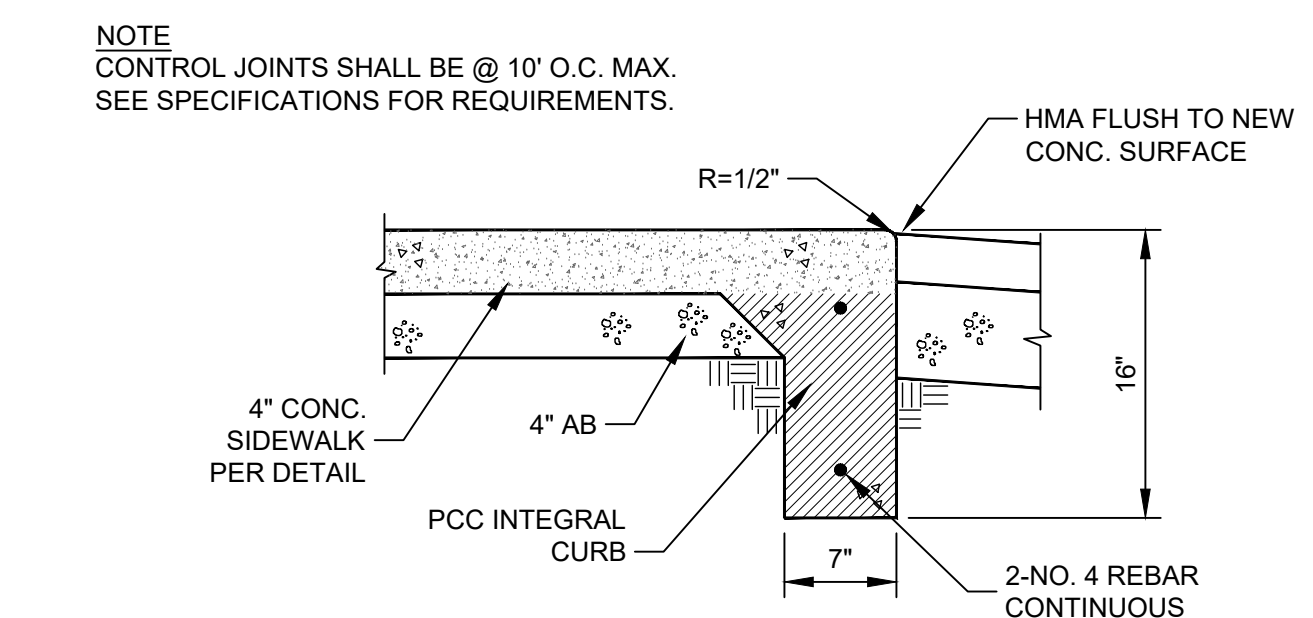
- NOTES:**
1. CONTROL JOINTS @ 10' O.C. MAX.
 2. MATCH EXISTING COLOR/FINISH (AS CLOSELY AS POSSIBLE).
 3. PLACE 4" AGG. BASE UNDER NEW SIDEWALK; RECOMPACT EX. AGG. BASE UNDER SIDEWALKS TO BE REMOVED/REPLACED.



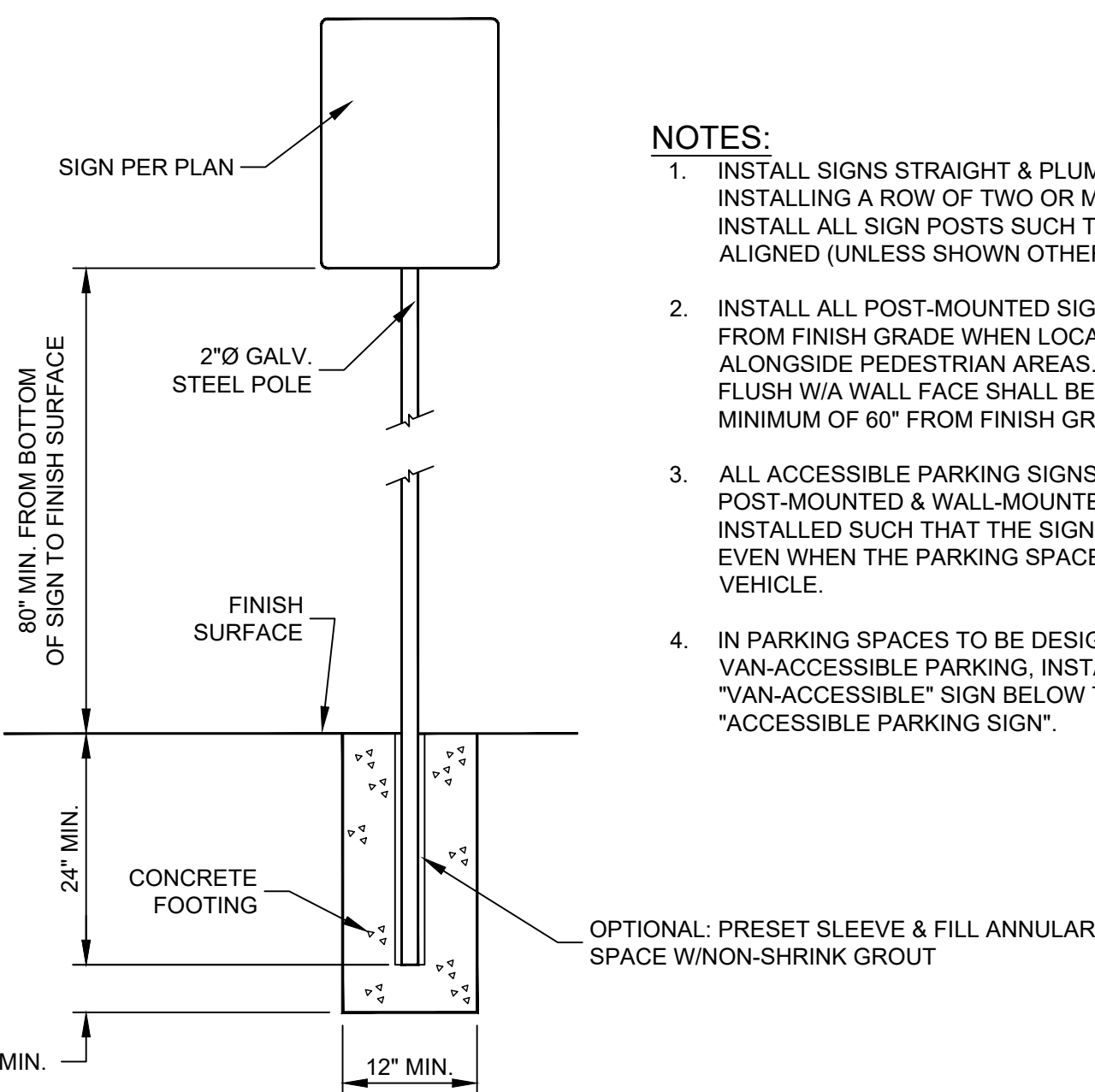
PCC SIDEWALK DETAIL
NTS



TYPE A1: INTEGRAL SIDEWALK & CURB
NTS



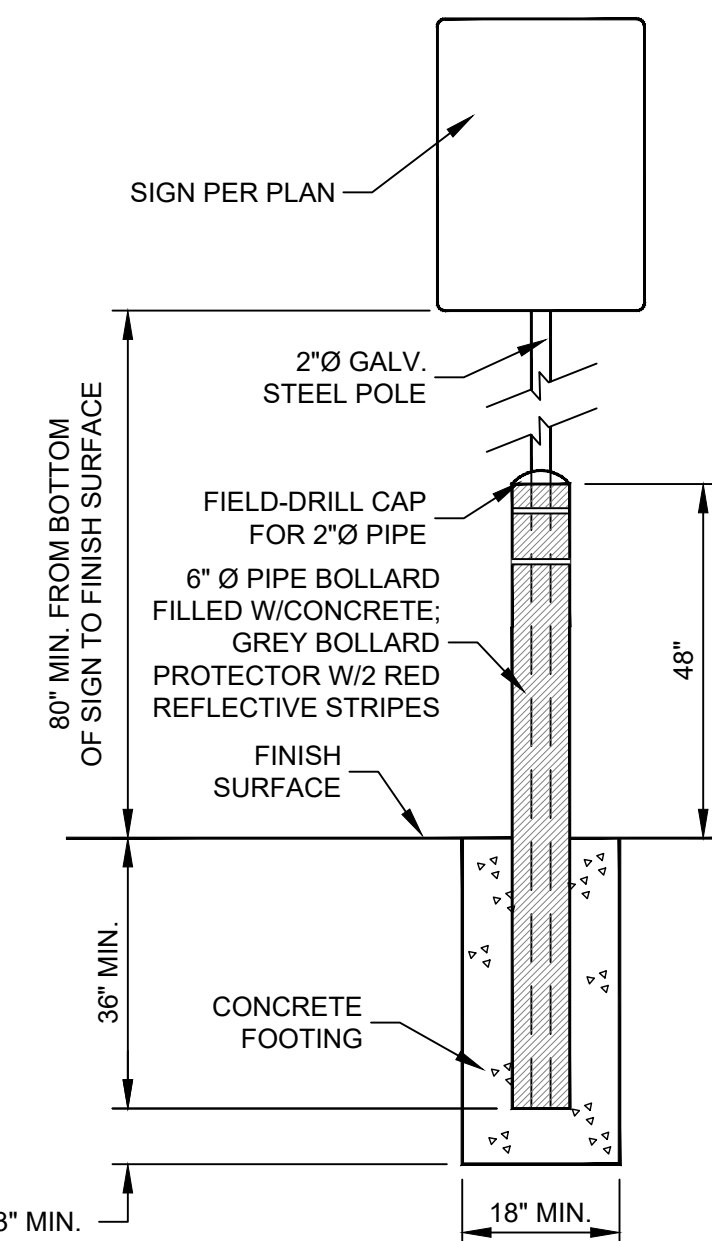
TYPE A2: INTEGRAL SIDEWALK & CURB
NTS



TYPICAL SIGN INSTALLATION
NTS

NOTES:

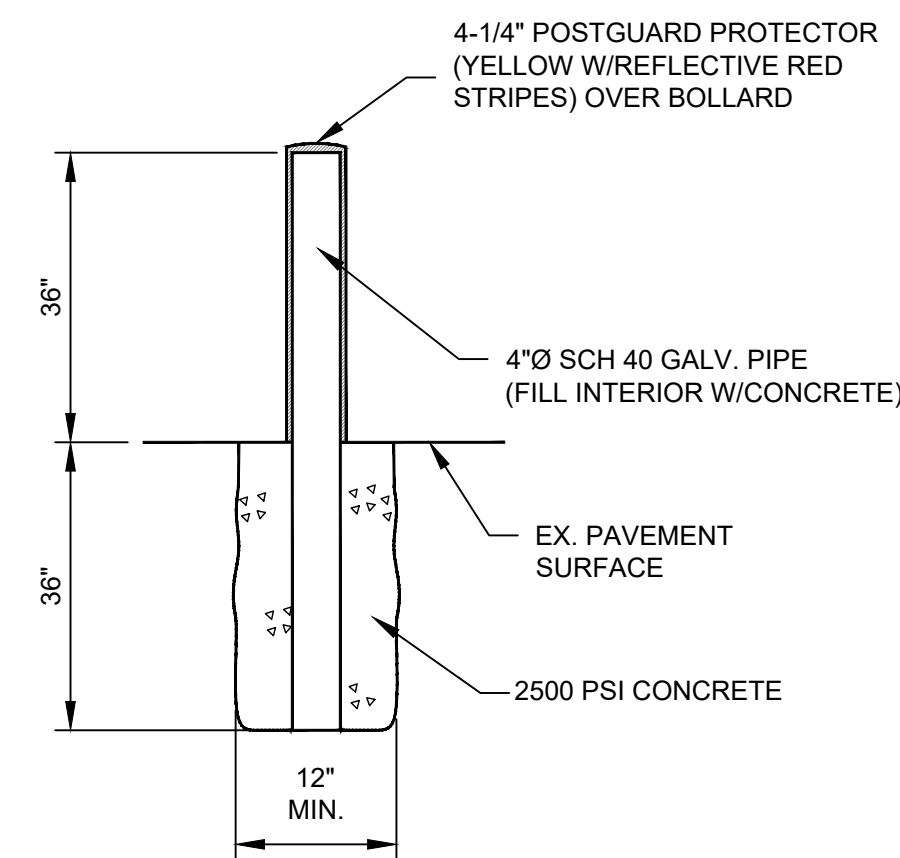
1. INSTALL SIGNS STRAIGHT & PLUMB. WHEN INSTALLING A ROW OF TWO OR MORE SIGNS, INSTALL ALL SIGN POSTS SUCH THAT POSTS ARE ALIGNED (UNLESS SHOWN OTHERWISE ON PLANS).
2. INSTALL ALL POST-MOUNTED SIGNS 80" MINIMUM FROM FINISH GRADE WHEN LOCATED IN OR ALONGSIDE PEDESTRIAN AREAS. SIGNS MOUNTED FLUSH WITH WALL FACE SHALL BE INSTALLED WITH MINIMUM OF 60" FROM FINISH GRADE.
3. ALL ACCESSIBLE PARKING SIGNS (BOTH POST-MOUNTED & WALL-MOUNTED) TO BE INSTALLED SUCH THAT THE SIGN IS ALWAYS VISIBLE, EVEN WHEN THE PARKING SPACE IS OCCUPIED BY A VEHICLE.
4. IN PARKING SPACES TO BE DESIGNATED FOR VAN-ACCESSIBLE PARKING, INSTALL THE "VAN-ACCESSIBLE" SIGN BELOW THE STANDARD "ACCESSIBLE PARKING SIGN".



TYPICAL BOLLARD/SIGNPOST INSTALLATION
NTS

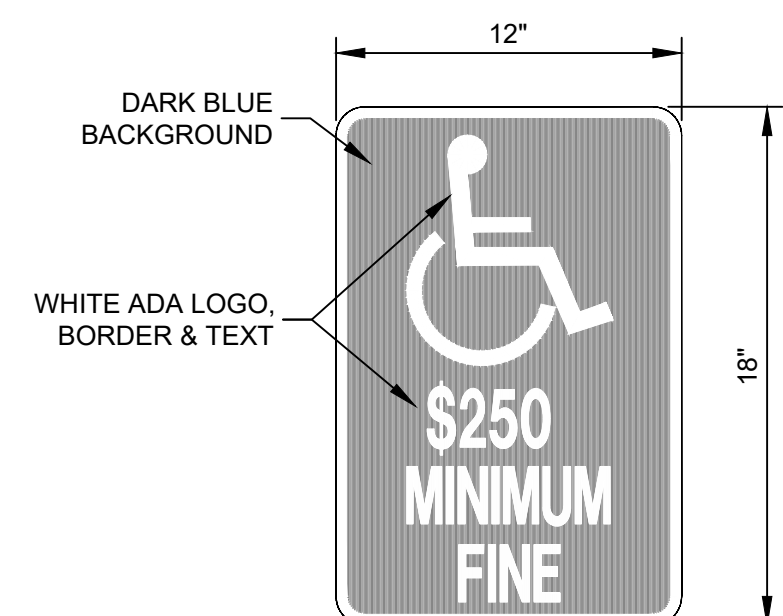
NOTES:

1. INSTALL SIGNS STRAIGHT & PLUMB. WHEN INSTALLING A ROW OF TWO OR MORE SIGNS, INSTALL ALL SIGN POSTS SUCH THAT POSTS ARE ALIGNED (UNLESS SHOWN OTHERWISE ON PLANS).
2. INSTALL ALL POST-MOUNTED SIGNS 80" MINIMUM FROM FINISH GRADE WHEN LOCATED IN OR ALONGSIDE PEDESTRIAN AREAS.
3. ALL ACCESSIBLE PARKING SIGNS TO BE INSTALLED SUCH THAT THE SIGN IS ALWAYS VISIBLE, EVEN WHEN THE PARKING SPACE IS OCCUPIED BY A VEHICLE.
4. IN PARKING SPACES TO BE DESIGNATED FOR VAN-ACCESSIBLE PARKING, INSTALL THE "VAN-ACCESSIBLE" SIGN BELOW THE STANDARD "ACCESSIBLE PARKING SIGN".



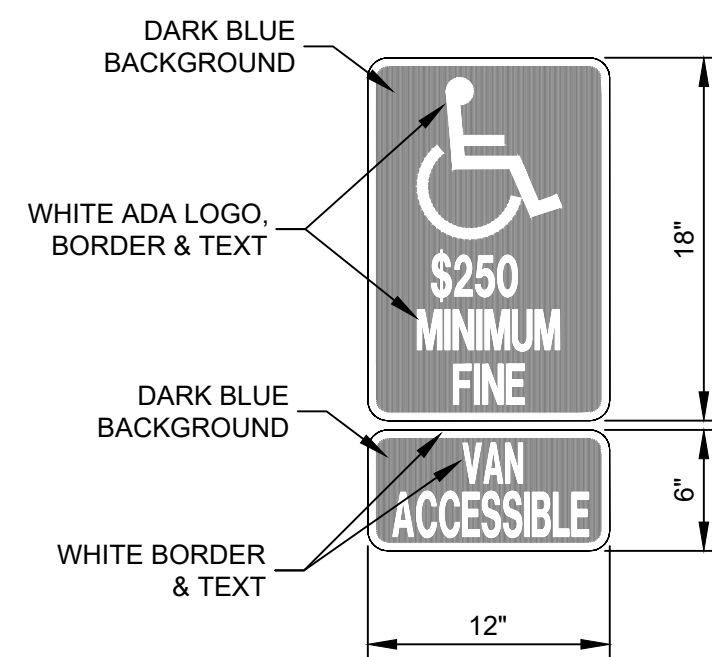
TYPICAL BOLLARD DETAIL
NTS

NOTES: ACCESSIBLE PARKING SIGN SHALL COMPLY WITH SECTION 11B-502.6 OF THE CBC.



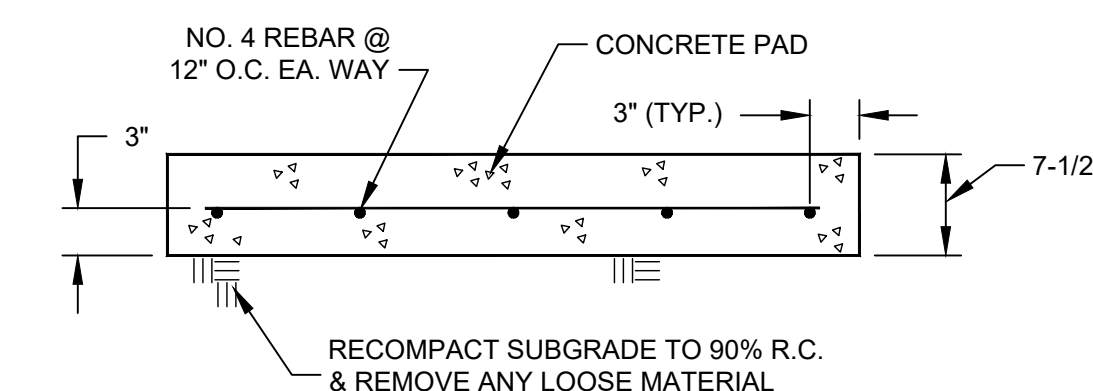
ACCESSIBLE PARKING SIGN
NTS

NOTES: ACCESSIBLE PARKING SIGN SHALL COMPLY WITH SECTION 11B-502.6 OF THE CBC.



ACCESSIBLE PARKING SIGN & VAN-ACCESSIBLE SIGN
NTS

NOTE: CONTROL JOINTS @ EVERY 10' MAX. (BOTH DIRECTIONS)



PCC PAD DETAIL
NTS

Pavement Engineering Inc.
You can ride on our reputation

Corporate Office:
3485 Sacramento Drive, Suite A
San Luis Obispo, CA 93401
805.781.2265



BERRYESSA UNION SCHOOL DISTRICT
2021 PAVEMENT IMPROVEMENT PROJECT

DETAILS



DRAWN BY: CH
PROJECT NUMBER: 200176
SCALE: NO SCALE
VERIFY SCALE
BAR REPRESENTS 1" ON ORIGINAL
DATE: NOVEMBER 2020
SHEET NUMBER: